

# Seeff



Koketso Phaswane  
078 033 1124  
koketso.phaswane@seeff.com

Contact Richards Bay

035 7890490

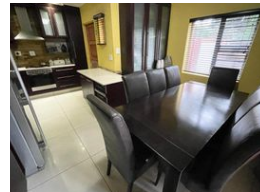
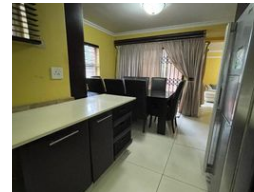
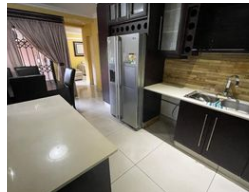
Lira Link Rd, Unit 2 Montego Park, Richards  
Bay Central, Richards Bay, 3900

3 Bedroom Duplex For Sale in Arboretum



SOLE MANDATE

Web Ref RLS970846



R1,380,000

3 2 1

**Monthly Bond Repayment** R14,010.16

Calculated over 20 years at 10.75% with no deposit.

**Transfer Costs** R40,017.00 **Bond Costs** R27,105.00

These calculations are only a guide. Please ask your conveyancer for exact calculations.

**Monthly Levy** R1,100 **Monthly Rates** R1,100

Exclusive Mandate - Perfect starter home in a popular area

Exclusive Mandate - Enjoy spacious living in this three-bedroom, two-bathroom unit.

This unit is conveniently located close to schools and many other amenities.

Perfect for a family or first-time buyer. This unit offers you three fully tiled bedrooms and two bathrooms of which 1 is an en-suite with the main bedroom, a spacious kitchen, and a lounge area. This unit also has a private yard and a courtyard.

Do not wait too long to make that call.

Call now for your viewing appointment!

## Features

### Interior

Bedrooms	3
Bathrooms	2
Kitchens	1
Recep. Rooms	2
Furnished	No

### Exterior

Garages	1
Carports / Parkings	1
Security	No
Pool	No
Views	False

### Sizes

Floor Size	24,488m <sup>2</sup>
Land Size	135m <sup>2</sup>

### Extras

Garden Balcony Electric Gate Totally Walled Granite Tops

<https://richardsbay.seeff.com>