

Seeff



Sebenzile Mthethwa
063 579 6915
sebe.mthethwa@seeff.com

Contact Richards Bay

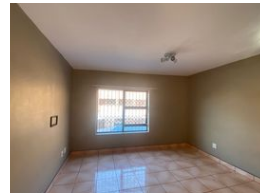
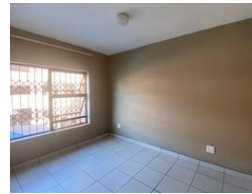
035 7890490

Lira Link Rd, Unit 2 Montego Park, Richards Bay Central, Richards Bay, 3900

2 Bedroom Flat For Sale in Arboretum



Web Ref RLS981509



R890,000

2 1

Monthly Bond Repayment R9,035.54

Calculated over 20 years at 10.75% with no deposit.

Transfer Costs R28,244.00 **Bond Costs** R21,450.00

These calculations are only a guide. Please ask your conveyancer for exact calculations.

Monthly Levy R1,200 **Monthly Rates** R1,000

Perfect lock up and go apartment in Arboretum

If you are looking for the perfect apartment close to the CBD area, then look no further, as this is the perfect apartment waiting just for you!

Safe and secure close to all amenities and boasts two bedrooms with built-in cupboards, an open plan lounge with a fitted kitchen, and one bathroom. There is a carport for your vehicle.

Perfect for someone looking for something neat and cozy. Do not wait too long to make contact, as this apartment will sell fast!

Contact me today for your viewing appointment.

Features

Interior

Bedrooms	2
Bathrooms	1
Kitchens	1
Recep. Rooms	1
Furnished	No

Exterior

Carports / Parkings	1
Security	No
Pool	No
Views	False

Sizes

Floor Size	53m²
------------	------

Extras

Granite Tops Stove Washing Machine Connection

<https://richardsbay.seeff.com>