

Seeff



Thobile Nxumalo
0605548653
thobile.nxumalo@seeff.com

Contact Richards Bay

035 7890490

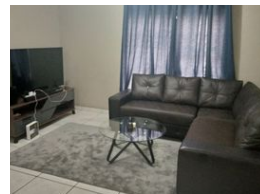
Lira Link Rd, Unit 2 Montego Park, Richards
Bay Central, Richards Bay, 3900

2 Bedroom Flat For Sale in Arboretum



SOLE MANDATE

Web Ref RLS988585



R855,000

2 1

Monthly Bond Repayment R8,536.15

Calculated over 20 years at 10.5% with no deposit.

Transfer Costs R28,334.00 **Bond Costs** R21,450.00

These calculations are only a guide. Please ask your conveyancer for exact calculations.

Monthly Levy R1,100 **Monthly Rates** R1,000

Exclusive Sole Mandate - Spacious two-bedroom apartment

Exclusive Sole Mandate - This property is located in a secure complex in Richards Bay Central, offering convenient access to a variety of shops, the mall, and other essential amenities, all within walking distance. The secure environment ensures peace of mind, making it a desirable location for residents.

The unit itself is neat and well-maintained, featuring one bathroom, a comfortable lounge area, and a functional kitchen. This apartment presents an excellent opportunity for both first-time buyers looking for a ready-to-move-in home and investors seeking a property with strong rental potential.

Call now for your viewing appointment.

Features

Interior

Bedrooms	2
Bathrooms	1
Kitchens	1
Recep. Rooms	1
Furnished	No

Exterior

Security	No
Pool	No
Views	False

Sizes

Floor Size	451m ²
Land Size	450m ²

Extras

Totally Fenced Bath, Toilet and Basin Burglar Bars

<https://richardsbay.seeff.com>