

Seeff



Sebenzile Mthethwa
063 579 6915
sebe.mthethwa@seeff.com

Contact Richards Bay

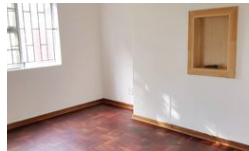
035 7890490

Lira Link Rd, Unit 2 Montego Park, Richards Bay Central, Richards Bay, 3900

2 Bedroom Flat For Sale in Arboretum



Web Ref 3091587



R968,000

🛏️ 2 🚿 2 🏠 1

Monthly Bond Repayment R9,827.42

Calculated over 20 years at 10.75% with no deposit.

Transfer Costs R30,412.00

Bond Costs R23,335.00

These calculations are only a guide. Please ask your conveyancer for exact calculations.

Monthly Levy R600

Monthly Rates R1,000

SPACIOUS UNIT AVAILABLE FOR SALE IN ARBORETUM

This well-kept unit is situated in the popular suburb of Arboretum offering 2 bedrooms, 2 bathrooms open-plan living areas, and a modern fitted kitchen.

The unit is centrally located, the complex is safe and secure offering automated gate access, and is very popular with first-time buyers.

Great opportunity for an unbeatable price! Call me today to view and make an offer!

Features

Pets Allowed		Yes	
Interior		Exterior	
Bedrooms	2	Garages	1
Bathrooms	2	Security	No
Kitchens	1	Pool	No
Recep. Rooms	2	Views	False
Furnished	No		
Extras		Sizes	
Garden Balcony Burglar Bars		Floor Size	127m²
		Land Size	24,488m²

<https://richardsbay.seeff.com>