

Seeff



Sebenzile Mthethwa
063 579 6915
sebe.mthethwa@seeff.com

Contact Richards Bay

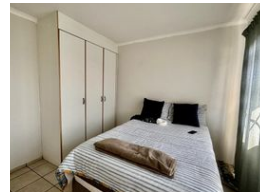
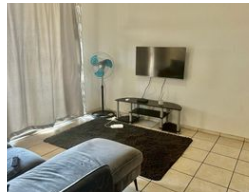
035 7890490

Lira Link Rd, Unit 2 Montego Park, Richards Bay Central, Richards Bay, 3900

2 Bedroom Flat For Sale in Arboretum



Web Ref RLS939704



R850,000

2 1 1

Monthly Bond Repayment R8,629.45

Calculated over 20 years at 10.75% with no deposit.

Transfer Costs R28,244.00 **Bond Costs** R21,450.00

These calculations are only a guide. Please ask your conveyancer for exact calculations.

Monthly Levy R1,050 **Monthly Rates** R1,100

Safe and secure 2 bedroom flat

This unit is located in Arboretum and is within walking distance from the mall.

This affordable cozy apartment consists of two spacious bedrooms, a bathroom, an open-plan kitchen, and a lounge area that has a sliding door that opens up to a balcony.

This apartment also offers you a single garage for your vehicle.

Regret no pets are allowed

Make the smart move and call now for your viewing appointment!
Home is our story

Features

Interior		Exterior		Sizes	
Bedrooms	2	Garages	1	Floor Size	77m ²
Bathrooms	1	Security	No	Land Size	4,289m ²
Kitchens	1	Pool	No		
Recep. Rooms	1	Views	False		
Furnished	No				

Extras

Electric Garage Totally Walled Burglar Bars Breakfast Nook

<https://richardsbay.seeff.com>