



Sebenzile Mthethwa
063 579 6915
sebe.mthethwa@seeff.com

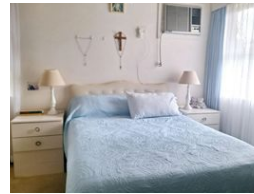
Contact Richards Bay

035 7890490

Lira Link Rd, Unit 2 Montego Park, Richards Bay Central, Richards Bay, 3900



Web Ref RLS969536



R1,500,000

3 2 1

Monthly Bond Repayment R15,482.83

Calculated over 20 years at 11% with no deposit.

Transfer Costs R45,785.00 **Bond Costs** R28,990.00

These calculations are only a guide. Please ask your conveyancer for exact calculations.

Monthly Rates R1,500

Charming family home in Arboretum

Are you looking for a home that gives you the space you need?

Then look no further as this is the perfect and suitable home waiting just for you and your family!

Boasting 3 bedrooms, 2 bathrooms, a lounge and dining area, with a fitted kitchen to cook those family feast meals. There is a single lock-up garage with a carport for those with more than one vehicle.

This property is well-priced and has a spacious land size for you to extend your home to your needs.

Do not miss out!

Call now for your viewing appointment.

Features

Pets Allowed Yes

Interior

Bedrooms	3
Bathrooms	2
Kitchens	1
Recep. Rooms	2
Furnished	No

Exterior

Garages	1
Carports / Parkings	1
Security	No
Pool	No
Views	False

Sizes

Land Size	1,128m ²
-----------	---------------------

Extras

Electric Gate Totally Walled Washing Machine Connection