

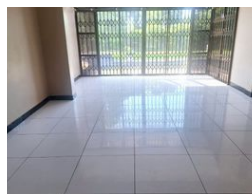
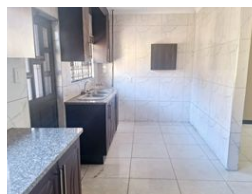
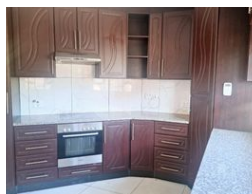


**Sebenzile Mthethwa**  
063 579 6915  
sebe.mthethwa@seeff.com

Contact Richards Bay

035 7890490

Lira Link Rd, Unit 2 Montego Park, Richards Bay Central, Richards Bay, 3900



R2,340,000

4 3 2

**Monthly Bond Repayment** R24,153.21  
Calculated over 20 years at 11% with no deposit.

**Transfer Costs** R100,752.00 **Bond Costs** R36,530.00  
These calculations are only a guide. Please ask your conveyancer for exact calculations.

**Monthly Rates** R1,700

Family home in Arboretum.

Looking to buy a home that gives you the space you need? Then look no further....

Location is everything and this warm and inviting family home offers it all. The home is situated within walking distance of schools, and shops and in close proximity to town. There is no greenbelt and the property is safe and secure.

The home offers plenty of space to extend should your needs change. The covered entertainment area is spacious and is the perfect place to enjoy the tranquil setting of the pool and established garden, adorned with fruit trees.

The home itself is neat and has been lovingly maintained. The rooms are comfortable and there is a lovely flow throughout the house.

Finding a dream home does not need to break the bank, let me show you how.

Features

<b>Pets Allowed</b>	Yes			
<b>Interior</b>		<b>Exterior</b>	<b>Sizes</b>	
Bedrooms	4	Garages	2	Land Size
Bathrooms	3	Security	No	1,077m <sup>2</sup>
Kitchens	1	Pool	Yes	
Recep. Rooms	3	Views	False	
Furnished	No			
<b>Extras</b>	Electric Garage Totally Walled Air Conditioner Built In Braai Jacuzzi Alarm System Granite Tops Stove Washing Machine Connection Scullery			