



Koketso Phaswane
078 033 1124
koketso.phaswane@seeff.com

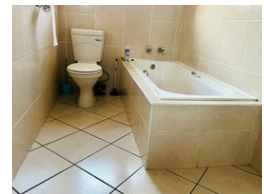
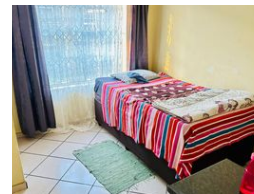
Contact Richards Bay

035 7890490

Lira Link Rd, Unit 2 Montego Park, Richards Bay Central, Richards Bay, 3900



Web Ref RLS967566



R970,000

2 2 1

Monthly Bond Repayment R10,012.23

Calculated over 20 years at 11% with no deposit.

Transfer Costs R30,412.00 **Bond Costs** R23,335.00

These calculations are only a guide. Please ask your conveyancer for exact calculations.

Monthly Levy R1,600 **Monthly Rates** R1,100

Lovely two bedroom simplex in perfect location

This simplex features two bedrooms and two bathrooms.
Main bedroom has own en-suite.
Fully fitted kitchen and a spacious lounge.
Close to all amenities.

Call me now to view!

Features

Interior		Exterior		Sizes	
Bedrooms	2	Garages	1	Floor Size	86m ²
Bathrooms	2	Security	No	Land Size	6,452m ²
Kitchens	1	Pool	No		
Recep. Rooms	1	Views	False		
Furnished	No				