

# Seeff



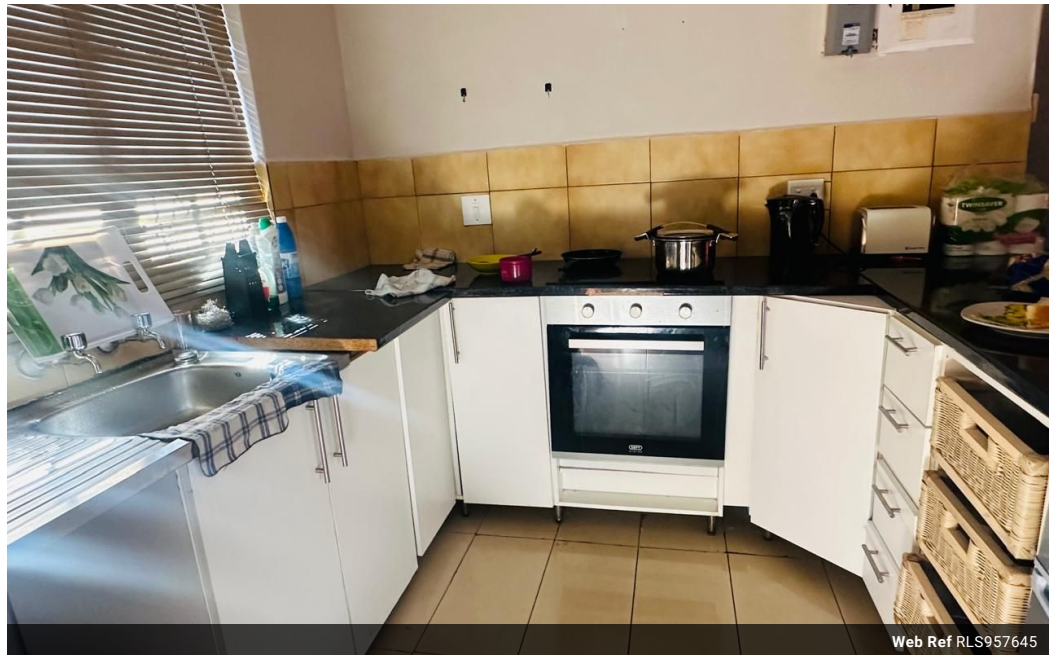
**Elijah Chetty**  
078 495 8633  
elijah.chetty@seeff.com

Contact Richards Bay

035 7890490

Lira Link Rd, Unit 2 Montego Park, Richards Bay Central, Richards Bay, 3900

## 2 Bedroom Simplex For Sale in Arboretum



Web Ref RLS957645



R1,080,000

2 1

**Monthly Bond Repayment** R10,964.47

Calculated over 20 years at 10.75% with no deposit.

**Transfer Costs** R32,749.00 **Bond Costs** R25,220.00

These calculations are only a guide. Please ask your conveyancer for exact calculations.

**Monthly Levy** R1,050 **Monthly Rates** R1,100

Neat 2 bedroom simplex in safe and secure complex

This unit offers spacious bedrooms with built-in cupboards and air conditioning throughout.

The open-plan lounge and kitchen give you ample space to move freely and there is also a private yard with a built-in braai to entertain your family and friends.

This is the perfect lock-up and go for a small family.

### Features

Pets Allowed		Yes			
Interior				Exterior	
Bedrooms	2			Carports / Parkings	1
Bathrooms	1			Security	No
Kitchens	1			Pool	No
Recep. Rooms	2			Views	False
Furnished	No				
Sizes					
Floor Size	60m <sup>2</sup>				
Land Size	9,586m <sup>2</sup>				

### Extras

Garden Electric Gate Air Conditioner Built In Braai Breakfast Nook