

Seeff



Sebenzile Mthethwa
063 579 6915
sebe.mthethwa@seeff.com

Contact Richards Bay

035 7890490

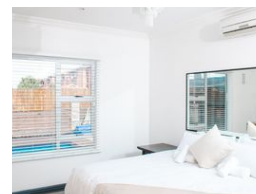
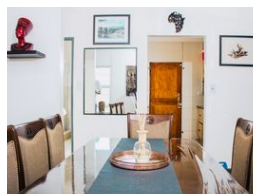
Lira Link Rd, Unit 2 Montego Park, Richards Bay Central, Richards Bay, 3900

UNDER OFFER



SOLE MANDATE

Web Ref RLS963225



R1,470,000

Monthly Bond Repayment R15,173.17
Calculated over 20 years at 11% with no deposit.

Transfer Costs R44,885.00 **Bond Costs** R28,990.00

These calculations are only a guide. Please ask your conveyancer for exact calculations.

Monthly Levy R1,725.5 **Monthly Rates** R1,400

2 2 1

Exclusive Mandate - Perfect 2 bedroom starter Townhouse in a popular area

Exclusive Mandate - This property is situated in a secure and well-taken care of complex in Arboretum.

Perfect for comfortable and modern living. This unit features an open plan lounge and dining area, a spacious fully fitted kitchen, and two bedrooms with the main bedroom having an en suite.

This apartment also offers you a well-designed entertainment area with a built-in braai and jacuzzi as well as a sparkling blue swimming pool to enjoy with your loved ones on those hot summer days.

Contact me today for your viewing appointment!

Features

Pets Allowed	Yes				
Interior		Exterior		Sizes	
Bedrooms	2	Garages	1	Floor Size	96m ²
Bathrooms	2	Carports / Parkings	1	Land Size	4,589m ²
Kitchens	1	Security	No		
Recep. Rooms	1	Pool	Yes		
Furnished	No	Views	False		
Extras	Electric Gate Built In Braai Jacuzzi Granite Tops Stove Washing Machine Connection Jacuzzi Bath				