

Seeff



Koketso Phaswane
078 033 1124
koketso.phaswane@seeff.com

Contact Richards Bay

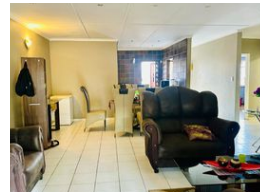
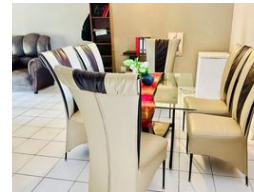
035 7890490

Lira Link Rd, Unit 2 Montego Park, Richards Bay Central, Richards Bay, 3900

3 Bedroom Simplex For Sale in Arboretum



Web Ref RLS975503



R1,530,000

🛏️ 3 🚿 2 🏠 1

Monthly Bond Repayment R15,275.21

Calculated over 20 years at 10.5% with no deposit.

Transfer Costs R46,787.00

Bond Costs R28,990.00

These calculations are only a guide. Please ask your conveyancer for exact calculations.

Monthly Levy R1,500

Monthly Rates R1,800

Modern and secure 3 bedroom apartment

This immaculate townhouse will make your life comfortable and convenient.

This apartment is perfectly situated in a well-kept complex near schools, the mall, hospitals, and the beach, therefore perfect as a fixed residence or can be utilized as an income-generating property.

Included are three spacious bedrooms, two bathrooms, an open-plan living area, and a modern kitchen. The living areas seamlessly flow onto the patio leading into your private garden.

Furthermore, you will have a lock-up garage and additional parking for other vehicles.

Make the smart move and contact me today for your viewing appointment!

Features

Pets Allowed Yes

Interior

Bedrooms	3
Bathrooms	2
Kitchens	1
Recep. Rooms	2
Furnished	No

Exterior

Garages	1
Carports / Parkings	1
Security	No
Pool	No
Views	False

Sizes

Floor Size	126m ²
Land Size	16,922m ²

Extras

Electric Gate Totally Walled Totally Fenced Stove