

# Seeff



Gugulethu Motha  
073 026 5665  
gugulethu.motha@seeff.com

Contact Richards Bay

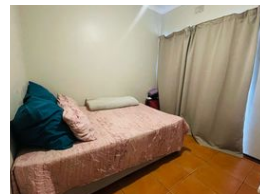
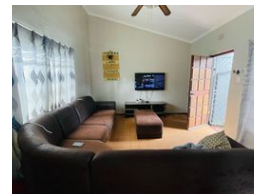
035 7890490

Lira Link Rd, Unit 2 Montego Park, Richards  
Bay Central, Richards Bay, 3900

## 3 Bedroom Simplex For Sale in Arboretum



Web Ref RLS980023



R1,070,000

3 1 1

**Monthly Bond Repayment** R10,682.66

Calculated over 20 years at 10.5% with no deposit.

**Transfer Costs** R32,851.00 **Bond Costs** R25,220.00

These calculations are only a guide. Please ask your conveyancer for exact calculations.

**Monthly Levy** R1,800 **Monthly Rates** R1,200

### Exclusive Mandate - Hidden Gem in Arboretum

Exclusive Mandate - Tucked away in the heart of Arboretum, this charming simplex is a rare find. As one of the lowest priced 3-bedroom simplexes in the area, it's an opportunity not to be missed.

Located just a stone's throw from top-rated schools and a bustling shopping centre, this simplex offers the ultimate in convenience. The town centre is just a few minutes away, making it easy to access all the amenities you need.

#### Warm and Inviting Living Spaces

Inside, the open-plan lounge and kitchen create a warm and inviting atmosphere, perfect for relaxing and entertaining. The private yard provides a tranquil oasis, while the single garage offers secure parking.

The complex is meticulously maintained, ensuring a safe and secure environment for residents. With its prime location and affordable price tag, this simplex is the...

### Features

#### Interior

Bedrooms	3
Bathrooms	1
Kitchens	1
Recep. Rooms	2
Furnished	No

#### Exterior

Garages	1
Security	No
Pool	No
Views	False

#### Extras

Totally Walled Bath, Toilet and Basin Satellite Dish Breakfast Nook