

Seeff



Terrence Pillay
078 135 6679
terrence.p@seeff.com

Contact Richards Bay

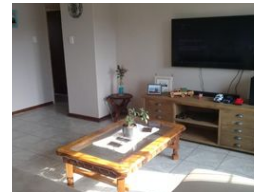
035 7890490

Lira Link Rd, Unit 2 Montego Park, Richards Bay Central, Richards Bay, 3900

2 Bedroom Simplex For Sale in Arboretum



Web Ref RLS887363



R1,049,000

2 1 1

Monthly Bond Repayment R10,473.01

Calculated over 20 years at 10.5% with no deposit.

Transfer Costs R32,851.00 **Bond Costs** R25,220.00

These calculations are only a guide. Please ask your conveyancer for exact calculations.

Monthly Levy R1,400 **Monthly Rates** R1,200

2 Bedroom simplex for sale in Arboretum

This unit is in a popular complex surrounded by all amenities, just walking distance to the Pick n Pay Essenwood mall.

The unit offers 2 well-sized bedrooms with built-in cupboards and ceiling fans, the master has an airconditioner. The spacious lounge, dining area, and fully fitted kitchen accentuate its modern appeal.

The lounge leads onto a large paved entertainment area that overlooks the spacious private garden. Pet friendly, lock-up garage, gated simplex - ideal for secure, everyday living.

Make the smart move, call me today.

Features

Pets Allowed	Yes				
Interior		Exterior		Sizes	
Bedrooms	2	Garages	1	Floor Size	99m²
Bathrooms	1	Carports / Parkings	1	Land Size	10,881m²
Kitchens	1	Security	Yes		
Recep. Rooms	2	Pool	No		
Furnished	No	Views	False		

Extras

Garden Patio Totally Walled Air Conditioner Built In Braai Alarm System Burglar Bars Breakfast Nook Washing Machine Connection Linen Room Entrance Hall