



Kevin McKune
083 877 5224
kevin.mckune@seeff.com

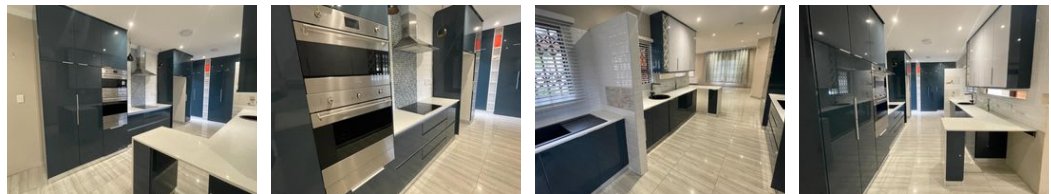
Contact Richards Bay
035 7890490

Lira Link Rd, Unit 2 Montego Park, Richards Bay Central, Richards Bay, 3900

UNDER OFFER



Web Ref RLS956787



R2,150,000

3 2 2

Monthly Bond Repayment R22,192.05
Calculated over 20 years at 11% with no deposit.

Transfer Costs R86,947.00 **Bond Costs** R34,625.00
These calculations are only a guide. Please ask your conveyancer for exact calculations.

Monthly Rates R1,400

Modern Magnificence!

With tasteful, modern design & finishes throughout, this spacious duet is move-in ready & just waiting for you to call it home. The air-conditioned living area features a sleek designer TV cabinet display which adds extra flare to an already striking space. There is a separate room, ideal as a TV lounge or study, or which can easily be used as a 4th bedroom with the addition of built-in cupboards.

The stand-out feature is undoubtedly the modern, fully-fitted kitchen. The kitchen has plenty of storage space and the caesar-stone preparation counters & prep-bowl make cooking a pleasure. The kitchen has SMEG built-in appliances throughout (eye-level oven, microwave, warming drawer, hob & extractor). Simply stunning. There are 3 bedrooms & 2 bathrooms. The main bedroom bathroom is a full en-suite bathroom featuring a large double...

Features

Pets Allowed Yes

Interior

Bedrooms	3
Bathrooms	2
Kitchens	2
Recep. Rooms	3
Furnished	No

Exterior

Garages	2
Carports / Parkings	2
Security	No
Pool	No
Views	False

Sizes

Floor Size	190m ²
Land Size	1,399m ²

Extras

Electric Gate Perimeter Wall Totally Walled Air Conditioner Security Gate Burglar Bars Granite Tops Breakfast Nook Stove Eye Level Oven Extractor Fan Washing Machine Connection Scullery