



**Gugulethu Motha**  
073 026 5665  
gugulethu.motha@seeff.com

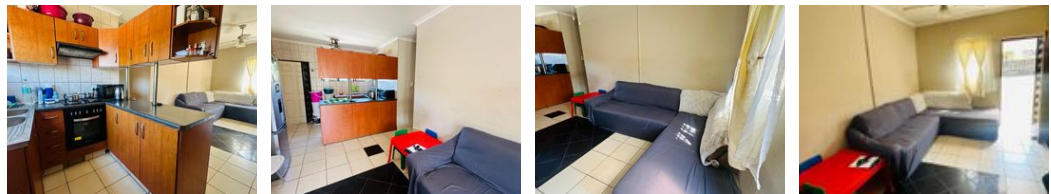
Contact Richards Bay

035 7890490

Lira Link Rd, Unit 2 Montego Park, Richards Bay Central, Richards Bay, 3900



Web Ref RLS955425



R1,320,000

🛏️ 3 🚿 1 🚗 1

**Monthly Bond Repayment** R13,624.89  
Calculated over 20 years at 11% with no deposit.

**Transfer Costs** R38,217.00    **Bond Costs** R27,105.00

These calculations are only a guide. Please ask your conveyancer for exact calculations.

**Monthly Rates** R1,200

Perfect family home in Birdswood

This property offers you three bedrooms with BIC and fully tiled, a fully fitted kitchen with an open plan lounge area, and one bathroom.

There is also a single automated garage and a spacious yard for extension. This house is ideal for those seeking something cozy and modern living space.

Perfectly located in the heart of Birdswood close to schools and many other amenities.

Contact me today for your viewing appointment!

Features

<b>Pets Allowed</b>	Yes				
<b>Interior</b>		<b>Exterior</b>		<b>Sizes</b>	
Bedrooms	3	Garages	1	Floor Size	79m <sup>2</sup>
Bathrooms	1	Security	No	Land Size	967m <sup>2</sup>
Kitchens	1	Pool	No		
Recep. Rooms	1	Views	False		
Furnished	No				

**Extras**

Electric Gate Electric Garage Totally Walled Burglar Bars Stove Extractor Fan Washing Machine Connection