



Koketso Phaswane
078 033 1124
koketso.phaswane@seeff.com

Contact Richards Bay

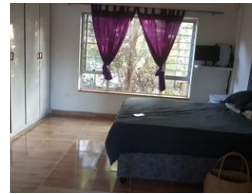
035 7890490

Lira Link Rd, Unit 2 Montego Park, Richards Bay Central, Richards Bay, 3900

NEW



Web Ref RLS979517



R2,300,000

Monthly Bond Repayment R23,740.33
Calculated over 20 years at 11% with no deposit.

Transfer Costs R98,138.00 **Bond Costs** R36,530.00

These calculations are only a guide. Please ask your conveyancer for exact calculations.

3 3 2

Open plan living home with beautiful features and large yard

If you are looking for a cozy, neat, and well-located family home, then look no further, as this is the perfect house waiting just for you!

This house boasts three bedrooms and three bathrooms, an open-plan living area, and a kitchen. There is also a double garage for your vehicles.

This house also comes with a two-bedroom flatlet, which is a big bonus and perfectly located in the heart of Birdswood, close to schools and other amenities.

Call now for your viewing appointment.

Features

Pets Allowed Yes

Interior

Bedrooms	3
Bathrooms	3
Kitchens	1
Recep. Rooms	2
Furnished	No

Exterior

Garages	2
Security	Yes
Pool	No
Views	False

Sizes

Land Size	1,415m ²
-----------	---------------------

Extras

Garden Air Conditioner Security Gate Granite Tops Breakfast Nook Eye Level Oven Dishwasher Connection Washing Machine Connection Scullery Laundry