

**Seeff**



**Terrence Pillay**  
078 135 6679  
terrence.p@seeff.com

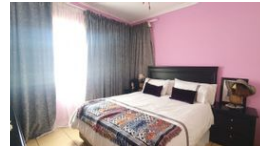
Contact Richards Bay

035 7890490

Lira Link Rd, Unit 2 Montego Park, Richards Bay Central, Richards Bay, 3900



Web Ref RLS908233



R2,800,000

6 3 2

**Monthly Bond Repayment** R28,901.27

Calculated over 20 years at 11% with no deposit.

**Transfer Costs** R141,887.00 **Bond Costs** R40,300.00

These calculations are only a guide. Please ask your conveyancer for exact calculations.

**Monthly Rates** R1,600

Paradise awaits you!

This is one of the finest houses in the area, from the entrance this house exudes curb appeal. The resplendent nature of the garden is groomed with every convenience for a relaxed indoor-outdoor lifestyle in a beautiful tranquil environment.

All six bedrooms have built-in cupboards, 3 bathrooms, a fully fitted kitchen, spacious separate scullery, and two automated garages.

The property also has a built-in braai, set conveniently closer to the entertainment area. The open plan layout allows for easy entertaining and makes this a must-view property.

Make that viewing appointment today!

### Features

**Pets Allowed** Yes

#### Interior

Bedrooms	6
Bathrooms	3
Kitchens	1
Recep. Rooms	3
Furnished	No

#### Exterior

Garages	2
Carports / Parkings	1
Security	Yes
Dom. Accom.	1
Pool	No
Views	False

#### Sizes

Land Size 1,045m<sup>2</sup>

#### Extras

Linen Room Entrance Hall Scullery Laundry Eye Level Oven Extractor Fan Washing Machine Connection Walk In Closet Alarm System Outdoor Beams Burglar Bars Totally Walled Built In Braai Air Conditioner Satellite Dish Electric Garage Electric Gate Balcony Garden

