

# Seeff

13 Bedroom Lodge For Sale in Birdwood

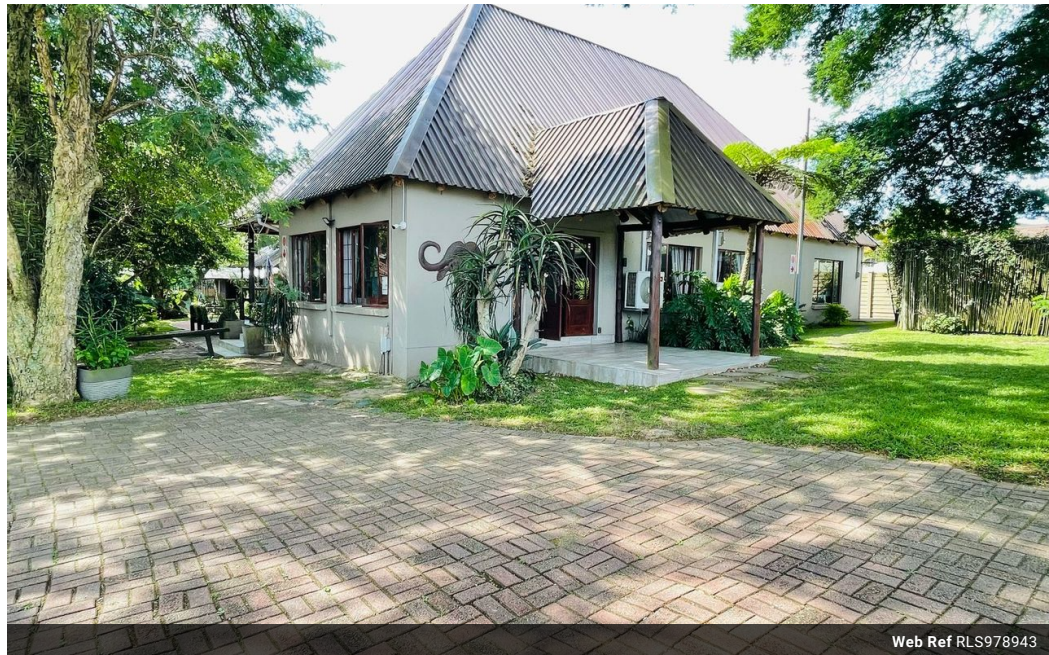


Gugulethu Motha  
073 026 5665  
gugulethu.motha@seeff.com

Contact Richards Bay

035 7890490

Lira Link Rd, Unit 2 Montego Park, Richards Bay Central, Richards Bay, 3900



Web Ref RLS978943



R7,750,000

13 20

**Monthly Bond Repayment** R78,680.24

Calculated over 20 years at 10.75% with no deposit.

**Transfer Costs** R721,728.00 **Bond Costs** R75,285.00

These calculations are only a guide. Please ask your conveyancer for exact calculations.

**Monthly Rates** R9,500

Seize the Opportunity, Luxurious Lodge with a Private Residence.

Where skies meet opportunity, and luxury meets serenity, lies this extraordinary lodge that entails a private residence. Nestled in a sought-after Suburb close to the airport, this haven offers a lifetime business opportunity.

"Thirteen Jewels of Slumber"

The lodge boasts thirteen opulent bedrooms, each adorned with air conditioning, en-suite bathrooms, and built-in cupboards. Thirteen bathrooms shine like beacons of comfort.

"The Heart of the Lodge"

A spacious dining hall, open-plan TV room, and braai area converge close to the pool to create the perfect hub for connection and celebration. The kitchen, equipped with a gas stove and patio, is the epicenter of culinary delights. A staff cottage with one bedroom, two bathrooms, kitchen, lounge, and air conditioning completes this oasis.

"Private Sanctuary"

The private...

## Features

**Pets Allowed** Yes

### Interior

Bedrooms	13
Bathrooms	20
Kitchens	2
Recep. Rooms	4
Furnished	No

### Exterior

Security	No
Pool	Yes
Views	False

### Sizes

Land Size	1,150m <sup>2</sup>
-----------	---------------------

### Extras

Electric Gate Balcony Totally Fenced Satellite Dish Intercom Air Conditioner Built In Braai Alarm System Granite Tops Linen Room Entrance Hall Scullery Laundry

<https://richardsbay.seeff.com>