

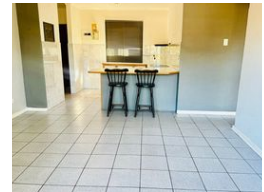
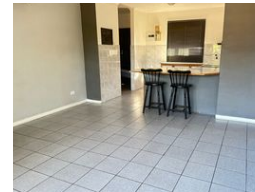


**Koketso Phaswane**  
078 033 1124  
koketso.phaswane@seeff.com

Contact Richards Bay

035 7890490

Lira Link Rd, Unit 2 Montego Park, Richards Bay Central, Richards Bay, 3900



### R929,000

2 1

**Monthly Bond Repayment** R9,589.03  
Calculated over 20 years at 11% with no deposit.

**Transfer Costs** R30,412.00 **Bond Costs** R23,335.00  
These calculations are only a guide. Please ask your conveyancer for exact calculations.

**Monthly Rates** R1,300

Neat and cozy 2 bedroom Simplex unit in the heart of Birdswood

This lovely unit is in a safe and secure complex and offers you a kitchen with built-in cupboards and a scullery, an open plan and spacious lounge area, two bedrooms with built-in cupboards, and one bathroom.

Do not miss this opportunity to make this unit your home. This unit will most definitely sell fast!

Perfect for a small family or first-time buyer.

Contact me today for your viewing appointment!

### Features

**Pets Allowed** Yes

#### Interior

Bedrooms	2
Bathrooms	1
Kitchens	1
Recep. Rooms	2
Furnished	No

#### Exterior

Carports / Parkings	1
Security	No
Pool	No
Views	False

#### Sizes

Floor Size	83m <sup>2</sup>
Land Size	11,045m <sup>2</sup>

#### Extras

Electric Gate Perimeter Wall Built In Braai Stove Washing Machine Connection Dishwasher Connection