

Seeff



Koketso Phaswane
078 033 1124
koketso.phaswane@seeff.com

Contact Richards Bay

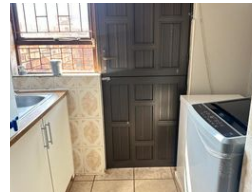
035 7890490

Lira Link Rd, Unit 2 Montego Park, Richards Bay Central, Richards Bay, 3900

2 Bedroom Simplex For Sale in Birdwood



Web Ref RLS986224



R980,000

2 1 1

Monthly Bond Repayment R9,949.24

Calculated over 20 years at 10.75% with no deposit.

Transfer Costs R30,412.00 **Bond Costs** R23,335.00

These calculations are only a guide. Please ask your conveyancer for exact calculations.

Monthly Levy R1,220 **Monthly Rates** R1,150

Attractive two-bedroom simplex in Birdwood is waiting just for YOU!!

Nestled in a sought-after complex, this GEM of a home is the epitome of charm, comfort, and secure living. Upon entering the home, one is welcomed into a bright, spacious living area. Neat kitchen adorned with wooden countertops, ample cupboard space, double sinks, and space for two under-counter appliances. Seamless flow through the living room and out onto the covered patio, overlooking the pretty, well-established garden. Simply the perfect spot to relax and enjoy the tranquility of nature's surroundings.

Effortless flow into the large main bedroom, offering a generous storage room, gracious windows which allow you a great view of the garden. Generously sized second bedroom in close proximity. The well-maintained complex boasts the spoils of a sparkling pool, a children's park, ample visitor parking, top-notch security,...

Features

Pets Allowed		Yes			
Interior		Exterior		Sizes	
Bedrooms	2	Garages	1	Floor Size	89m²
Bathrooms	1	Security	No	Land Size	8,495m²
Kitchens	1	Pool	Yes		
Recep. Rooms	1	Views	False		
Furnished	No				
Extras					
Electric Gate Totally Walled Stove					

<https://richardsbay.seeff.com>