



Koketso Phaswane
078 033 1124
koketso.phaswane@seeff.com

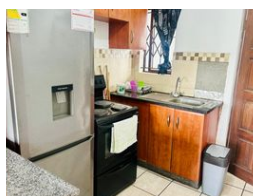
Contact Richards Bay

035 7890490

Lira Link Rd, Unit 2 Montego Park, Richards Bay Central, Richards Bay, 3900



Web Ref RLS967077



R680,000

2 1

Monthly Bond Repayment R7,018.88
Calculated over 20 years at 11% with no deposit.

Transfer Costs R23,730.00 **Bond Costs** R17,680.00

These calculations are only a guide. Please ask your conveyancer for exact calculations.

Monthly Levy R990 **Monthly Rates** R900

Perfect Starter Home or Investment Opportunity

Discover the perfect blend of comfort and convenience in this neat two-bedroom unit, fully tiled for effortless maintenance and featuring built-in cupboards for ample storage. Ideally situated close to all amenities, this property offers a prime opportunity for investors. Make a smart move and capitalize on its potential – a great investment awaits!

Features

Interior		Exterior		Sizes	
Bedrooms	2	Carports / Parkings	1	Floor Size	45m ²
Bathrooms	1	Security	No	Land Size	6,309m ²
Kitchens	1	Pool	No		
Recep. Rooms	1	Views	False		
Furnished	No				

Extras

Electric Gate Totally Walled 24 Hour Access Secure Parking