

**Seeff**



**Elijah Chetty**  
078 495 8633  
elijah.chetty@seeff.com

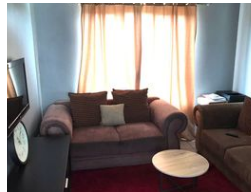
Contact Richards Bay

035 7890490

Lira Link Rd, Unit 2 Montego Park, Richards Bay Central, Richards Bay, 3900



Web Ref RLS973698



R680,000

2 1

**Monthly Bond Repayment** R7,018.88  
Calculated over 20 years at 11% with no deposit.

**Transfer Costs** R23,730.00 **Bond Costs** R17,680.00  
These calculations are only a guide. Please ask your conveyancer for exact calculations.

**Monthly Levy** R750 **Monthly Rates** R1,065

### Neat and Cozy 2 Bedroom Unit

This stunning unit is ready for immediate occupation in a secure and tranquil complex. The property boasts two spacious bedrooms, a comfortable lounge, and an open-plan kitchen. The bathroom features a convenient tub. Enjoy the peace of mind that comes with living in a safe and secure environment.

### Features

#### Interior

Bedrooms	2
Bathrooms	1
Kitchens	1
Recep. Rooms	1
Furnished	No

#### Exterior

Carports / Parkings	1
Security	No
Pool	No
Views	False

#### Sizes

Floor Size	45m <sup>2</sup>
Land Size	4,852m <sup>2</sup>

#### Extras

Electric Gate