



**Renaav Moodley**  
083 236 0712  
renaav.moodley@seeff.com

Contact Richards Bay

035 7890490

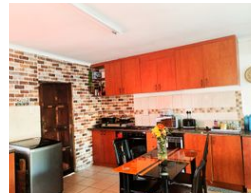
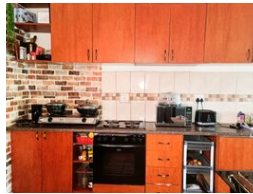
Lira Link Rd, Unit 2 Montego Park, Richards Bay Central, Richards Bay, 3900

UNDER OFFER



SOLE MANDATE

Web Ref RLS974504



R1,170,000

2 1

**Monthly Bond Repayment** R12,076.60  
Calculated over 20 years at 11% with no deposit.

**Transfer Costs** R32,749.00 **Bond Costs** R25,220.00

These calculations are only a guide. Please ask your conveyancer for exact calculations.

**Monthly Rates** R1,000

### Exclusive Mandate - Cozy family home in Brackenham

Exclusive Mandate - This charming 2-bedroom, 1-bathroom family home in Brackenham offers the perfect blend of comfort and convenience. Set on just under 700 square meters of land, this neat and spacious property provides ample room for your family to grow.

The open-plan living area creates a welcoming atmosphere, ideal for entertaining or simply relaxing in style. Whether you're a first-time buyer or looking to downsize, this well-maintained home offers excellent value with plenty of potential.

Don't miss the chance to make this lovely property yours!

### Features

**Pets Allowed** Yes

#### Interior

Bedrooms	2
Bathrooms	1
Kitchens	1
Recep. Rooms	2
Furnished	No

#### Exterior

Security	No
Pool	No
Views	False

#### Sizes

Land Size	630m <sup>2</sup>
-----------	-------------------

#### Extras

Totally Walled Air Conditioner Entrance Hall