

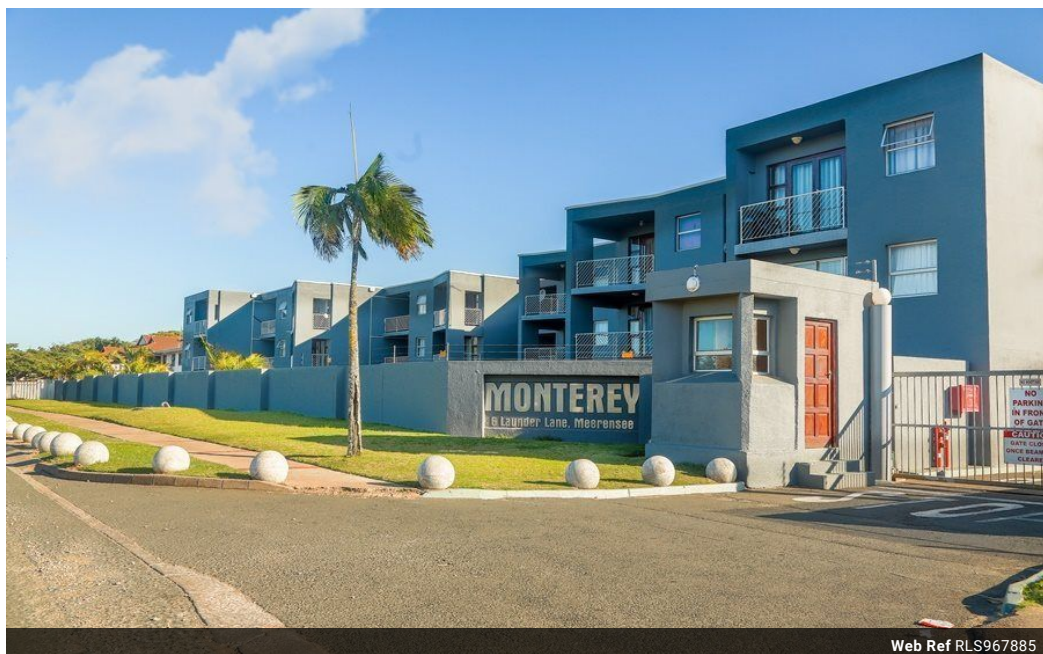


**Terrence Pillay**  
078 135 6679  
terrence.p@seeff.com

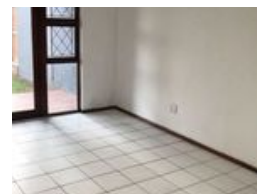
Contact Richards Bay

035 7890490

Lira Link Rd, Unit 2 Montego Park, Richards Bay Central, Richards Bay, 3900



Web Ref RLS967885



R799,000

2 1

**Monthly Bond Repayment** R8,247.19  
Calculated over 20 years at 11% with no deposit.

**Transfer Costs** R25,898.00 **Bond Costs** R19,565.00  
These calculations are only a guide. Please ask your conveyancer for exact calculations.

**Monthly Levy** R1,000 **Monthly Rates** R900

### Lock - Up and Go Meer En See

Are you a first-time buyer looking for a place to call your own, or an Investor seeking a lucrative investment opportunity?

Look no further! This ground-floor apartment is the perfect choice for you.

The apartment features two generously sized bedrooms, providing ample space for relaxation and personal retreats.

The well-kept bathroom caters to all your daily needs.

The cozy lounge area is spacious and perfect for family gatherings and entertaining guests.

The efficient kitchen is designed for easy meal preparation and everyday use.

For your convenience, the property includes a carport, offering protected parking for your vehicles.

For peace of mind and privacy, the apartment is walled and security-gated.

There's a swimming pool, recreational facilities, and 24-hour security.

Don't miss the opportunity to make this...

### Features

#### Interior

Bedrooms	2
Bathrooms	1
Kitchens	1
Recep. Rooms	2
Furnished	No

#### Exterior

Carports / Parkings	1
Security	Yes
Pool	Yes
Views	False

#### Sizes

Floor Size	73m <sup>2</sup>
Land Size	10,237m <sup>2</sup>

#### Extras

Security Gate Guard House Breakfast Nook Extractor Fan