

Seeff



Kevin McKune
083 877 5224
kevin.mckune@seeff.com

Contact Richards Bay

035 7890490

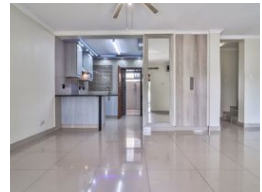
Lira Link Rd, Unit 2 Montego Park, Richards Bay Central, Richards Bay, 3900

UNDER OFFER



SOLE MANDATE

Web Ref RLS960774



R1,695,000

2 1.5 1

Monthly Bond Repayment R17,495.59
Calculated over 20 years at 11% with no deposit.

Transfer Costs R54,739.00 **Bond Costs** R30,875.00
These calculations are only a guide. Please ask your conveyancer for exact calculations.

Monthly Levy R1,253 **Monthly Rates** R1,200

Exclusive Mandate - Modern & Move-In Ready Duplex

Exclusive Mandate - This sleek, stylish & spacious duplex raises the bar and will definitely meet and exceed your expectations! The unit is renovated throughout with tasteful design & a modern touch, all of this without losing its homely feel and practicality.

Downstairs, the open plan living area open to the kitchen & entertainment patio, has plenty of room and the set-up lends itself to both relaxation & entertaining. The fully-fitted kitchen features all you'll need & more, including electric(stove, hob & extractor), breakfast counter, ample storage & granite countertops There is also an undercover, tiled courtyard with washing machine & dishwasher connections. The undercover braai area overlooks the delightful, landscaped garden, The back-lighting in the flower beds & walls adds a magical, relaxed feel of an...

Features

Pets Allowed Yes

Interior

Bedrooms 2
Bathrooms 1.5
Kitchens 1
Recep. Rooms 2
Furnished No

Exterior

Garages 1
Carports / Parkings 2
Security Yes
Pool Yes
Views False

Sizes

Floor Size 126m²
Land Size 8,652m²

Extras

Electric Gate Electric Garage Perimeter Wall Totally Walled Air Conditioner Built In Braai Security Gate Burglar Bars Electric Fencing Granite Tops Breakfast Nook Stove Extractor Fan Washing Machine Connection Dishwasher Connection Laundry