



Koketso Phaswane
078 033 1124
koketso.phaswane@seeff.com

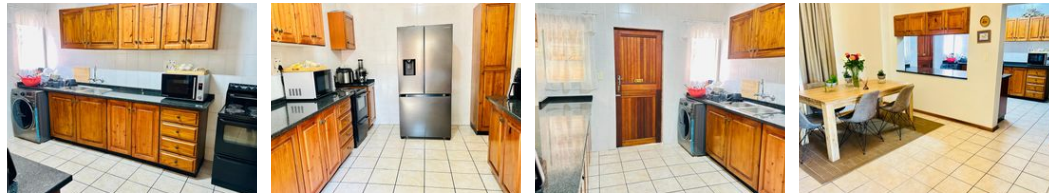
Contact Richards Bay

035 7890490

Lira Link Rd, Unit 2 Montego Park, Richards Bay Central, Richards Bay, 3900



Web Ref RLS970543



R1,390,000

3 1.5 1

Monthly Bond Repayment R14,347.42
Calculated over 20 years at 11% with no deposit.

Transfer Costs R40,317.00 **Bond Costs** R27,105.00
These calculations are only a guide. Please ask your conveyancer for exact calculations.

Monthly Rates R1,650

Exceptional 3 Bedroom Unit in Meer en See

Embracing a coveted address in the heart of Meer en See, this delightful 3 bedroom unit combines style, comfort, and convenience.

This unit consists of unbeatable location, walking distance to shops, restaurants, and beaches, beautifully appointed interior with 3 spacious bedrooms, the main bedroom retreat with balcony access, showcasing stunning Meer en See views. This property also has it's own private yard and secure enclosed courtyard for outdoor enjoyment.

Let me know if you'd like a viewing.

Features

Pets Allowed	Yes			
Interior		Exterior		Sizes
Bedrooms	3	Garages	1	Floor Size
Bathrooms	1.5	Carports / Parkings	1	Land Size
Kitchens	1	Security	No	159m ²
Recep. Rooms	2	Pool	No	22,799m ²
Furnished	No	Views	False	
Extras				
Balcony 24 Hour Access Electric Gate Totally Walled Guest Toilet Carport				