

**Seeff**

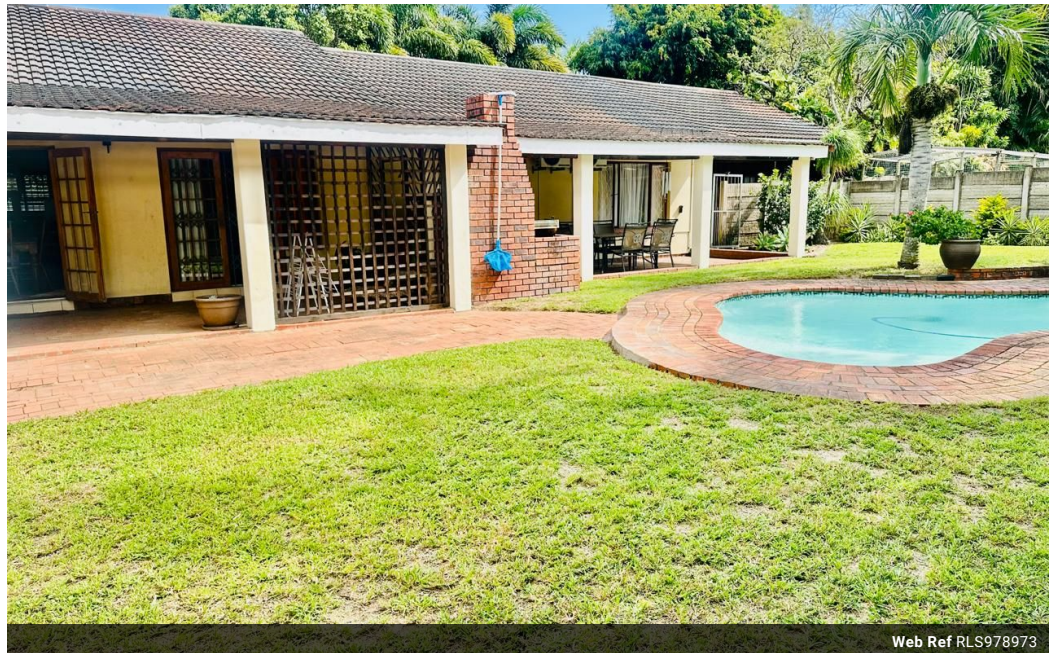


**Terrence Pillay**  
078 135 6679  
terrence.p@seeff.com

Contact Richards Bay

035 7890490

Lira Link Rd, Unit 2 Montego Park, Richards Bay Central, Richards Bay, 3900



Web Ref RLS978973



R2,340,000

3 1 2

**Monthly Bond Repayment** R24,153.21

Calculated over 20 years at 11% with no deposit.

**Transfer Costs** R100,752.00 **Bond Costs** R36,530.00

These calculations are only a guide. Please ask your conveyancer for exact calculations.

**Monthly Rates** R2,075

Beautiful 4 bedroom family home in Meer en See.

This beautiful 4-bedroom home offers an abundance of space and comfort, ideal for a growing family.

The open-plan design creates a seamless flow between the kitchen, dining area, and lounge perfect for relaxed family living and entertaining. The study room further enhances the living space and includes a separate entrance making it an excellent option for a home based business or additional guest accommodations.

The property is set on a large stand, featuring a sparkling swimming pool, entertainment area, and plenty of outdoor space for leisure and activities. Security is assured with a fully fenced yard motorized gate and a double garage.

This home offers a wonderful combination of comfort convenience and potential.

Do not miss your chance to view this fantastic property - Contact me today for your private viewing!

### Features

**Pets Allowed** Yes

#### Interior

Bedrooms	3
Bathrooms	1
Kitchens	1
Recep. Rooms	2
Studies	1
Furnished	No

#### Exterior

Garages	2
Carports / Parkings	1
Security	No
Pool	Yes
Views	False

#### Sizes

Land Size	1,262m <sup>2</sup>
-----------	---------------------

#### Extras

Electric Gate Totally Walled Totally Fenced Air Conditioner Built In Braai Alarm System Burglar Bars Granite Tops Breakfast Nook Dishwasher Connection Washing Machine Connection Walk In Closet Linen Room Entrance Hall Scullery Laundry