

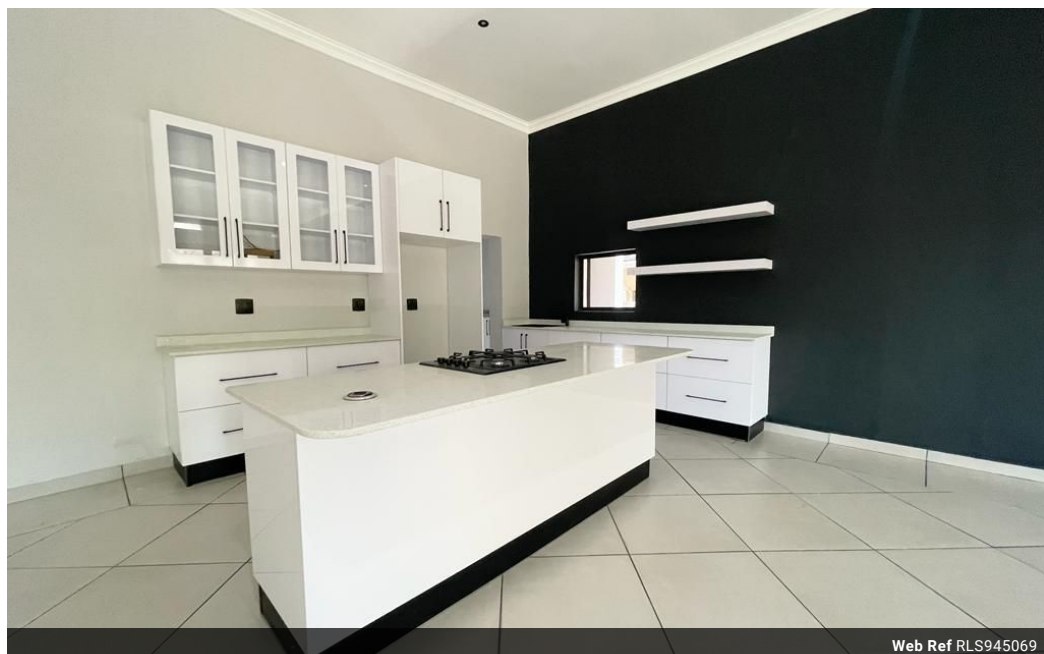


**Kevin McKune**  
083 877 5224  
kevin.mckune@seeff.com

Contact Richards Bay

035 7890490

Lira Link Rd, Unit 2 Montego Park, Richards Bay Central, Richards Bay, 3900



Web Ref RLS945069



R3,480,000

4 4 2

**Monthly Bond Repayment** R35,920.16  
Calculated over 20 years at 11% with no deposit.

**Transfer Costs** R219,514.00 **Bond Costs** R47,840.00  
These calculations are only a guide. Please ask your conveyancer for exact calculations.

**Monthly Rates** R2,200

**Modern Masterpiece! Fully Renovated. Just Move In!**

In the centrally situated, safe, sought-after suburb of Meerensee, you'll find this spacious modern open-plan concept home second to none. Renovated throughout, inside & out, you'll be moving into a brand new home!

The theme of the home is one of free-flowing, spacious & light-filled spaces.

The centerpiece & highlight is the living area & modern fully fitted kitchen. The room opens up & becomes one with the undercover patio entertainment area. There are 4 bedrooms, 3 of which are en-suite.

Additional features include a double lock-up garage, walk-in pantry, store-room, scullery/laundry room, built-in gas braai,

A property such as this does not come along very often!

Contact me today to view!

**Features**

**Pets Allowed** Yes

**Interior**

Bedrooms 4  
Bathrooms 4  
Kitchens 1  
Recep. Rooms 2  
Furnished No

**Exterior**

Garages 2  
Carports / Parkings 2  
Security No  
Pool No  
Views False

**Sizes**

Floor Size 330m<sup>2</sup>  
Land Size 1,352m<sup>2</sup>

**Extras**

Electric Gate Electric Garage Perimeter Wall Totally Walled Totally Fenced Burglar Bars Granite Tops Breakfast Nook Dishwasher Connection Washing Machine Connection Scullery