



Kevin McKune
083 877 5224
kevin.mckune@seeff.com

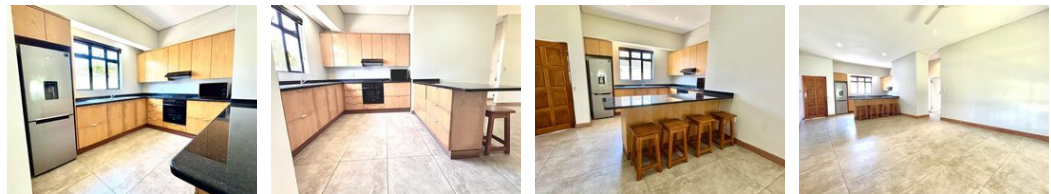
Contact Richards Bay

035 7890490

Lira Link Rd, Unit 2 Montego Park, Richards Bay Central, Richards Bay, 3900



Web Ref RLS977004



R2,495,000

3 2 3

Monthly Bond Repayment R25,753.10
Calculated over 20 years at 11% with no deposit.

Transfer Costs R115,320.00 **Bond Costs** R38,415.00
These calculations are only a guide. Please ask your conveyancer for exact calculations.

Monthly Levy R2,100 **Monthly Rates** R2,522

Luxury Lakeside Retirement Village Lifestyle!

Don't miss out on this rare gem of a property!

The fully air-conditioned, spacious unit is move-in ready & neatly tucked away within the complex giving it added privacy & appeal. The airy open-plan living area & fully-fitted kitchen open up to the back patio with built-in braai. The view beyond the garden & patio enhances the relaxed feel of the space.

There are 3 bedrooms & 2 modern bathrooms. The main bedroom bathroom is en-suite & has the further convenience of a double basin vanity.

The bedrooms boast ample storage space & in addition, there are 2 linen closets for all your extras.

There is no shortage of garage space as the unit has a double garage (automated doors) one of which is tandem which allows for parking of 3 vehicles. What a pleasure!

Contact me today to schedule a viewing!

Features

Interior		Exterior		Sizes	
Bedrooms	3	Garages	3	Floor Size	156m ²
Bathrooms	2	Security	Yes	Land Size	8,447m ²
Kitchens	1	Pool	Yes		
Recep. Rooms	2	Views	False		
Furnished	No				

Extras

Electric Garage Perimeter Wall Totally Walled Air Conditioner Built In Braai Guard House Boomed Area Granite Tops Breakfast Nook Stove Extractor Fan Washing Machine Connection Dishwasher Connection