

**Seeff**



**Kevin McKune**  
083 877 5224  
kevin.mckune@seeff.com

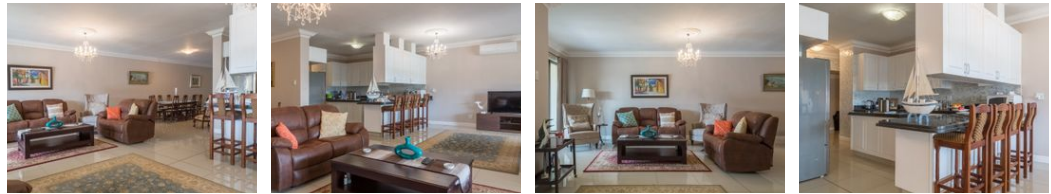
Contact Richards Bay

035 7890490

Lira Link Rd, Unit 2 Montego Park, Richards Bay Central, Richards Bay, 3900



Web Ref 3676209



R8,400,000

4   
 4   
 2

**Monthly Bond Repayment** R86,703.82  
Calculated over 20 years at 11% with no deposit.

**Transfer Costs** R799,214.00    **Bond Costs** R80,035.00  
These calculations are only a guide. Please ask your conveyancer for exact calculations.

**Monthly Levy** R3,000    **Monthly Rates** R2,500

Impressive, architecturally Designed Masterpiece overlooking the beautiful waters of Meerensee

This exquisite, beautifully built home is situated on a large stand overlooking the waterfront, The perfect elegant indoor/outdoor living scenario with double doors leading you to the inviting patio area overlooking the calmness of the ocean.

From entering you can experience the quality finishes, functionality and style of this modern masterpiece, it is simply breathtaking. Modern kitchen with build in stove, white glossy cabinetry, a center island and plenty of cupboard space.

This home is beautifully decorated and is immaculately presented. Classical elegance with unique features and excellent security.

### Features

Interior		Exterior		Sizes	
Bedrooms	4	Garages	2	Floor Size	350m <sup>2</sup>
Bathrooms	4	Carports / Parkings	1	Land Size	19,325m <sup>2</sup>
Kitchens	1	Security	Yes		
Recep. Rooms	1	Pool	No		
Studies	1	Views	False		
Furnished	No				