



Elijah Chetty
078 495 8633
elijah.chetty@seeff.com

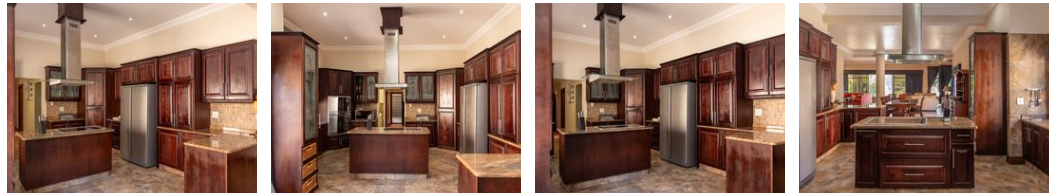
Contact Richards Bay

035 7890490

Lira Link Rd, Unit 2 Montego Park, Richards Bay Central, Richards Bay, 3900



Web Ref RLS888454



R14,300,000

Monthly Bond Repayment R147,602.94
Calculated over 20 years at 11% with no deposit.

Transfer Costs R1,501,477.00 **Bond Costs** R108,535.00
These calculations are only a guide. Please ask your conveyancer for exact calculations.

🛏️ 5 🚿 4 🏠 3

The Pinnacle of Luxury Living

This exquisite property embodies the perfect blend of style, sophistication, and timeless elegance, offering unparalleled views of the yacht club and bay from its canal-side setting. Situated on a corner stand, the home enjoys maximum privacy and boasts the largest garden, complete with a private jetty to fully embrace the waterfront lifestyle. Upon entering, custom doors lead to a grand entrance hall adorned with ornate chandeliers, setting the tone for the exceptionally finished interior. The classic and sumptuous décor complements the modern layout, featuring expansive living areas perfect for entertaining. The ground floor offers a guest suite, an additional guest loo, a gourmet kitchen with high-end appliances and ample storage, a separate scullery and laundry area, and a well-positioned office.

The living rooms, dining...

Features

Pets Allowed		Exterior		Sizes	
	Yes	Garages	3	Floor Size	359m ²
Interior		Security	Yes	Land Size	19,325m ²
Bedrooms	5	Pool	No		
Bathrooms	4	Views	True		
Kitchens	1				
Recep. Rooms	3				
Studies	1				
Furnished	No				

Extras

Garden Balcony Jetty Electric Gate Electric Garage Guard Guard House Boomed Area
Granite Tops Breakfast Nook Eye Level Oven Dishwasher Connection Washing Machine
Connection Walk In Closet Linen Room Entrance Hall Scullery Laundry