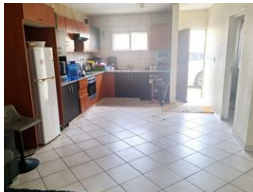




Sebenzile Mthethwa
063 579 6915
sebe.mthethwa@seeff.com

Contact Richards Bay
035 7890490
Lira Link Rd, Unit 2 Montego Park, Richards Bay Central, Richards Bay, 3900

2 Bedroom Flat For Sale in Veld En Vlei



R880,000

2 1 1

Monthly Bond Repayment R8,934.01
Calculated over 20 years at 10.75% with no deposit.
Transfer Costs R28,244.00 **Bond Costs** R21,450.00
These calculations are only a guide. Please ask your conveyancer for exact calculations.
Monthly Rates R1,000

2 bedroom Apartment in Veld En Vlei for sale

Well-appointed apartment set in a sought-after area. This 87 square metre home is spacious giving you and your family ample space to navigate daily.

This home is close to all amenities which allows your day-to-day commute to be a breeze.

Perfect for a first-time buyer or small family.

Call today for the first viewing appointment!

Home is our story, let us help you find your forever home!.

Features

Interior		Exterior		Sizes	
Bedrooms	2	Garages	1	Floor Size	87m²
Bathrooms	1	Security	No	Land Size	14,313m²
Kitchens	1	Pool	No		
Recep. Rooms	1	Views	False		
Furnished	No				