



Jessica Liebenberg
0732360712
jessica.liebenberg@seeff.com

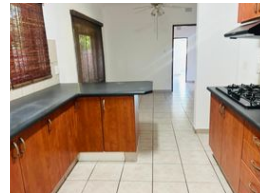
Contact Richards Bay

035 7890490

Lira Link Rd, Unit 2 Montego Park, Richards Bay Central, Richards Bay, 3900



Web Ref RLS957553



R2,295,000

3 2 2

Monthly Bond Repayment R23,299.50

Calculated over 20 years at 10.75% with no deposit.

Transfer Costs R97,838.00 **Bond Costs** R36,530.00

These calculations are only a guide. Please ask your conveyancer for exact calculations.

Monthly Rates R1,329

Substantial home in sought after Honeysuckle Street

Location is everything and if you are buying in Veld en Vlei then this immaculate property is exactly what you were looking for.

This home sits on a large stand and has a low-maintenance garden. There is a separate spacious flatlet with its own carport. The main house has multiple living rooms offering diversity in terms of how the space can be used. The main suite is massive and has a large room which will make a wonderful gym or private lounge.

The sparkling pool is inviting and has been secured with a perimeter fence. This is a home to be proud of. Let me help you make your property dreams come true.

Features

Pets Allowed Yes

Interior

Bedrooms	3
Bathrooms	2
Kitchens	1
Recep. Rooms	2
Studies	1
Furnished	No

Exterior

Garages	2
Carports / Parkings	1
Security	No
Pool	Yes
Views	False

Sizes

Floor Size	266m ²
Land Size	854m ²

Extras

Garden Electric Gate Electric Garage Entrance Hall Scullery Laundry