

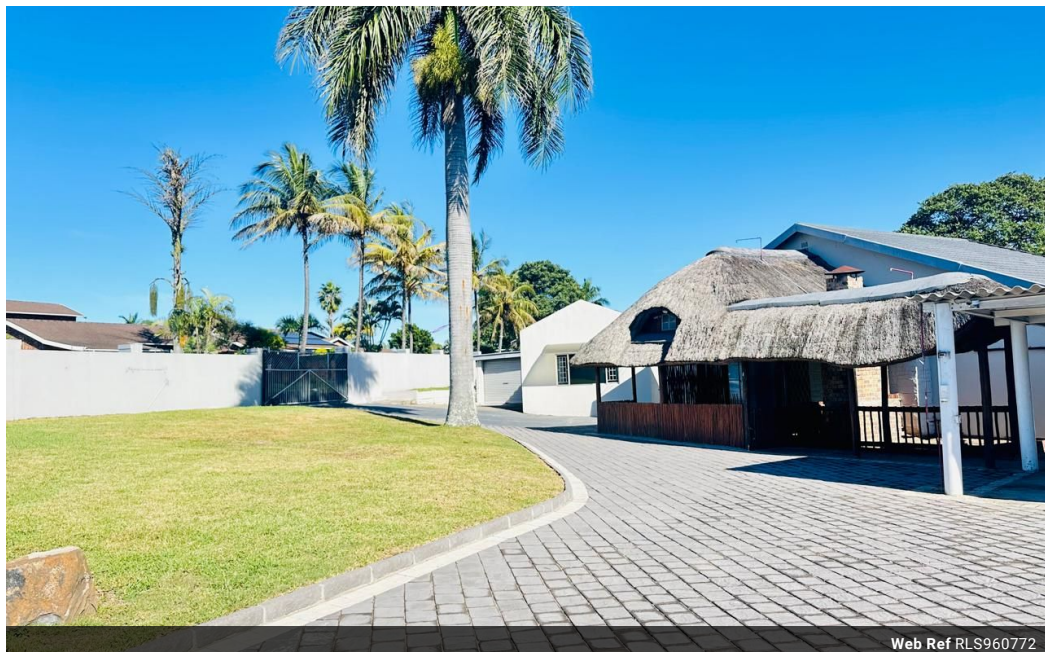


Koketso Phaswane
078 033 1124
koketso.phaswane@seeff.com

Contact Richards Bay

035 7890490

Lira Link Rd, Unit 2 Montego Park, Richards Bay Central, Richards Bay, 3900



Web Ref RLS960772



R1,950,000

Monthly Bond Repayment R20,127.67
Calculated over 20 years at 11% with no deposit.

Transfer Costs R72,206.00 **Bond Costs** R32,760.00
These calculations are only a guide. Please ask your conveyancer for exact calculations.

Monthly Rates R1,500

3 2

Spacious House with a flatlet for sale in Veld en Vlei

Beautiful family home in a well-known area, close to schools and the shopping center.

This home provides a fully fitted kitchen with granite tops, ample cabinet space, and a scullery. You will find three spacious bedrooms with built-in cupboards, two bathrooms, a lounge, and a carport. This house is in a safe and secure area and is walled.

There is also a lovely garden cottage that has its own entrance.

When walking into this spacious flatlet you will find two bedrooms, with an open plan kitchen and lounge, separate shower, and toilet. The main bedroom includes an ensuite.

Call today for your viewing appointment!

Features

Pets Allowed	Yes			
Interior		Exterior		Sizes
Bedrooms	3	Carports / Parkings	1	Land Size
Bathrooms	2	Security	No	1,078m ²
Kitchens	1	Pool	No	
Recep. Rooms	2	Views	False	
Furnished	No			
Extras				
Totally Walled Granite Tops Eye Level Oven				