

**Seeff**



**Terrence Pillay**  
078 135 6679  
terrence.p@seeff.com

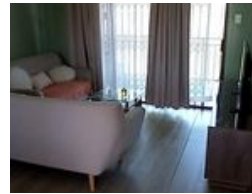
Contact Richards Bay

035 7890490

Lira Link Rd, Unit 2 Montego Park, Richards Bay Central, Richards Bay, 3900



Web Ref RLS956936



R790,000

2 1

**Monthly Bond Repayment** R8,020.31  
Calculated over 20 years at 10.75% with no deposit.

**Transfer Costs** R25,898.00 **Bond Costs** R19,565.00

These calculations are only a guide. Please ask your conveyancer for exact calculations.

**Monthly Levy** R1,200 **Monthly Rates** R1,100

### Modern 2 bedroom apartment

This modern apartment is nestled in a prime location and boasts a sleek and tidy design.

The apartment consists of two bedrooms, an open-plan dining and lounge area, a spacious bathroom, and a fully-fitted kitchen with loads of cupboard space. The complex is safe and secure with automated gate access.

Perfect for a first-time buyer or small family.

Contact me today for your viewing appointment and let me help you make this apartment your home!

### Features

Interior		Exterior		Sizes	
Bedrooms	2	Carports / Parkings	1	Floor Size	62m <sup>2</sup>
Bathrooms	1	Security	No	Land Size	3,884m <sup>2</sup>
Kitchens	1	Pool	No		
Recep. Rooms	2	Views	False		
Furnished	No				

#### Extras

Totally Walled Air Conditioner Burglar Bars Granite Tops Breakfast Nook Stove Extractor Fan Washing Machine Connection