



Cameron Moodley
060 305 4162
cameron.moodley@seeff.com

Contact Richards Bay

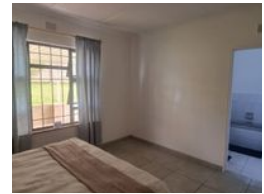
035 7890490

Lira Link Rd, Unit 2 Montego Park, Richards Bay Central, Richards Bay, 3900

3 Bedroom Simplex To Let in Grantham Park



Web Ref RLS946795



R12,000 pm

Lease Period 12 months
Annual Escalation -

Availability Immediately

Deposit -

🛏 3 🚿 2 🏠 1

Beautiful 3 bedroom townhouse for rent

This beautiful townhouse is situated in a quiet and peaceful area and is one out of 4 units in this Simplex.

This spacious unit consists of a fully fitted kitchen with a gas stove, a lounge area, three bedrooms, and two bathrooms of which one is an ensuite in the main bedroom.

The lounge area leads out to a nice and cozy entertainment area in the backyard. This apartment is close to amenities and schools.

This simplex is pet-friendly which is a bonus!

Call today for your viewing appointment

Features

Pets Allowed Yes

Interior

Bedrooms	3
Bathrooms	2
Kitchens	1
Recep. Rooms	2
Furnished	No

Exterior

Garages	1
Carports / Parkings	2
Security	No
Pool	No
Views	False

Sizes

Floor Size	113m ²
Land Size	1,881m ²

Extras

Air Conditioner Built In Braai

