



Mycele-Lee Beaumont  
060 476 1867  
mycele-lee.beaumont@seeff.com

Contact Richards Bay

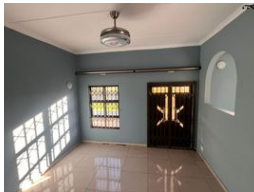
035 7890490

Lira Link Rd, Unit 2 Montego Park, Richards Bay Central, Richards Bay, 3900

6 Bedroom House To Let in Panorama



Web Ref RLS983632



R13,300 pm

Lease Period 12 months  
Annual Escalation - Availability Immediately Deposit -

6 1 2

Spacious 6-Bedroom Home with Double Garage and Large Garden

This stunning 6-bedroom home boasts a classic layout, perfect for family living.

The interior features separate living and dining rooms, a spacious kitchen, and ample space throughout. With all rooms on a single level, it's ideal for effortless navigation and comfortable living.

The expansive private garden provides a serene outdoor oasis, while the double garage and roomy driveway offer ample parking and storage. A practical and versatile home with endless possibilities.

Features

Interior		Exterior		Sizes	
Bedrooms	6	Garages	2	Land Size	1,533m²
Bathrooms	1	Security	No		
Kitchens	1	Pool	No		
Recep. Rooms	2	Views	False		
Furnished	No				

Extras

Garden Patio Electric Garage Guest Toilet Shower, Toilet and Basin Bath, Toilet and Basin  
Satellite Dish Burglar Bars Stove Washing Machine Connection