

Seeff



S'Mile Mchunu
0787081996
smile.mchunu@seeff.com

Contact Richards Bay

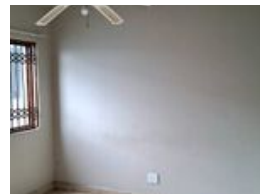
035 7890490

Lira Link Rd, Unit 2 Montego Park, Richards
Bay Central, Richards Bay, 3900

2 Bedroom Flat To Let in Arboretum



Web Ref 3269985



R6,800 pm

Lease Period 12 months
Annual Escalation -

Availability Immediately **Deposit** -

 2  1

LOVELY OPEN PLAN UNIT IN THE HEART OF THE CBD

This modern unit is perfectly located in the heart of the CBD, within walking distance to popular malls and amenities.

Features:

- 2 spacious bedrooms
- Modern kitchen and bathroom
- Open-plan living area
- Secure building with 24/7 access control
- Walking distance to:
- Major shopping malls
- Restaurants and cafes
- Public transportation

Ideal for:

- Professionals working in the CBD
 - Anyone looking for a convenient and urban lifestyle
- Call now for your viewing.

Features

Interior

Bedrooms	2
Bathrooms	1
Kitchens	1
Recep. Rooms	2
Furnished	No

Exterior

Carports / Parkings	1
Security	Yes
Pool	No
Views	False

Extras

Guard House Balcony Electric Gate Safe Electric Fencing