



Sheryl Pillay
063 567 1657
sheryl.pillay@seeff.com

Contact Richards Bay

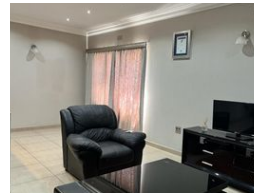
035 7890490

Lira Link Rd, Unit 2 Montego Park, Richards Bay Central, Richards Bay, 3900

3 Bedroom House To Let in Arboretum



Web Ref RLS952688



R15,500 pm

Lease Period 12 months
Annual Escalation -

Availability Immediately Deposit -

🛏️ 3 🚿 2 🚗 1

Perfect family home in Arboretum

Welcome to this charming and meticulously maintained 3-bedroom house nestled in the serene Arboretum neighborhood. Boasting a fusion of modern comforts, this residence offers an ideal retreat for families or individuals seeking tranquility and convenience.

Upon entering, you're greeted by a spacious living area adorned with large windows that invite ample natural light, creating an inviting ambiance for gatherings or relaxation. The open layout seamlessly connects the living room to the dining area, perfect for entertaining guests or enjoying family meals.

The beautiful kitchen features granite countertops and plenty of cabinet space for storage. Whether you're preparing a casual breakfast or hosting a dinner party, this kitchen is sure to inspire culinary creativity.

The master bedroom offers a peaceful sanctuary with its...

Features

Pets Allowed Yes

Interior

Bedrooms	3
Bathrooms	2
Kitchens	1
Recep. Rooms	2
Furnished	No

Exterior

Garages	1
Carports / Parkings	1
Security	No
Pool	No
Views	False

Sizes

Floor Size	991m ²
Land Size	992m ²

Extras

Totally Walled Air Conditioner Alarm System Granite Tops Breakfast Nook

