

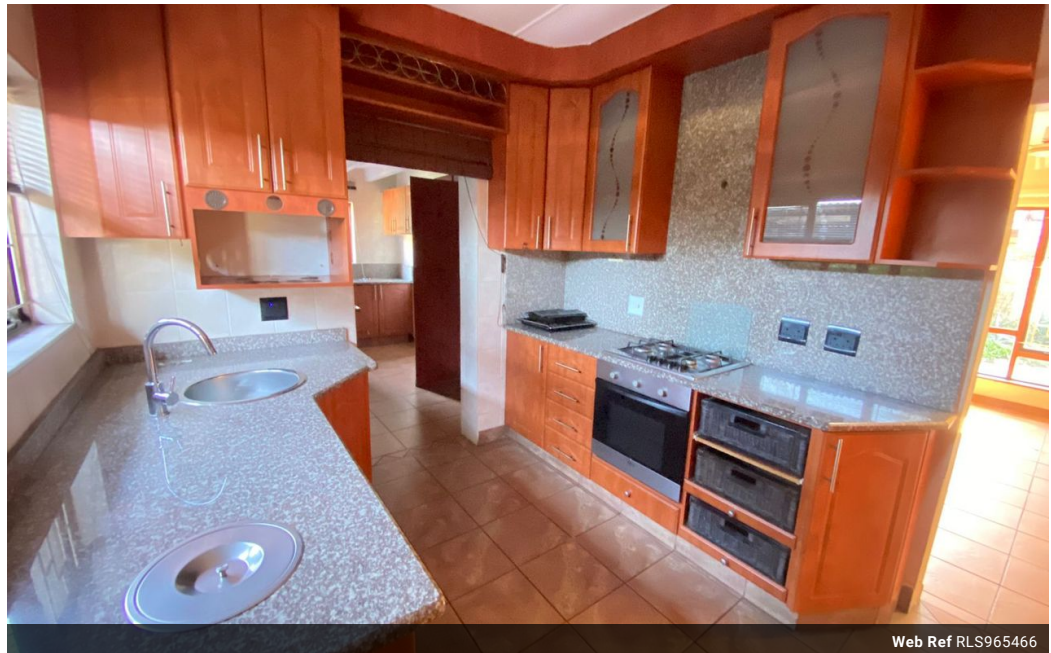


Sheryl Pillay
 063 567 1657
 sheryl.pillay@seeff.com

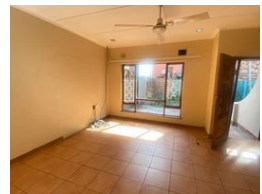
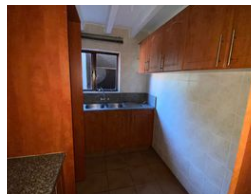
Contact Richards Bay

035 7890490

Lira Link Rd, Unit 2 Montego Park, Richards Bay Central, Richards Bay, 3900



Web Ref RLS965466



R15,000 pm

Lease Period 12 months **Availability** Immediately **Deposit** -
Annual Escalation -

3 2

"PERFECTLY SITUATED LOCK UP AND GO FAMILY HOME"

Nestled in the well-known area of Richards Bay, lies this family home that consists of three bedrooms, and two bathrooms of which one is an en suite, an open-plan lounge area, a dining room, and a fitted kitchen.

The home features a large garden next to the swimming pool side and a covered entertainment area.

Call today to view and don't miss out!

Features

Pets Allowed Yes

Interior

Bedrooms	3
Bathrooms	2
Kitchens	1
Recep. Rooms	2
Furnished	No

Exterior

Carports / Parkings	1
Security	No
Pool	Yes
Views	False

Sizes

Floor Size 662m²

Extras

Electric Gate Totally Walled Air Conditioner Alarm System Burglar Bars Extractor Fan Scullery