

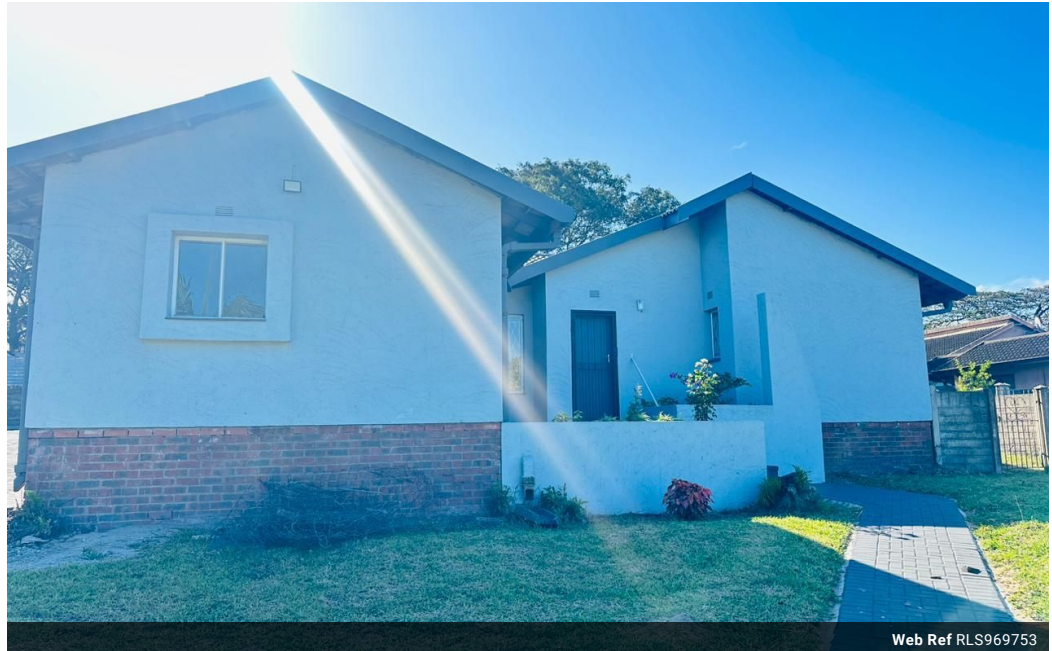


Siphindile Dlamini
073 033 8955
siphindile.dlamini@seeff.com

Contact Richards Bay

035 7890490

Lira Link Rd, Unit 2 Montego Park, Richards Bay Central, Richards Bay, 3900



Web Ref RLS969753



R15,800 pm

Lease Period 12 months **Availability** Immediately **Deposit** -
Annual Escalation -

3 2 1

Stunning family home for rental

Welcome to this stunning newly renovated 3-bedroom house in the heart of Arboretum! Nestled in a quiet street, this beautiful property boasts an expansive yard, perfect for outdoor entertainment or relaxation.

The spacious interior features a modern kitchen, dining room, and lounge area, ideal for family living. The three bedrooms are generously sized, with one en-suite bathroom and an additional family bathroom.

Additional features include a single garage with extra room and a bathroom, providing ample storage and versatility.

This property is a rare find in the Arboretum, offering a tranquil atmosphere and plenty of space for a growing family.

Don't miss out on this incredible opportunity.

Features

Pets Allowed	Yes				
Interior		Exterior		Sizes	
Bedrooms	3	Garages	1	Land Size	1,129m ²
Bathrooms	2	Security	No		
Kitchens	1	Pool	No		
Recep. Rooms	2	Views	False		
Furnished	No				