



Siphindile Dlamini
 073 033 8955
 siphindile.dlamini@seeff.com

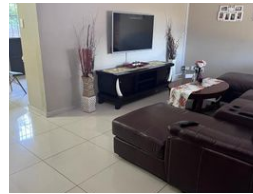
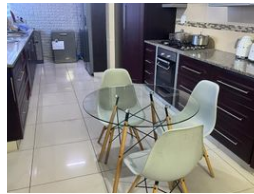
Contact Richards Bay

035 7890490

Lira Link Rd, Unit 2 Montego Park, Richards Bay Central, Richards Bay, 3900



Web Ref RLS940078



R17,800 pm

Lease Period 12 months
Annual Escalation -

Availability Immediately

Deposit -

4 3 2

Beautiful House in the heart of Arboretum

Welcome to this exquisite property that boasts 4 spacious bedrooms and 3 full bathrooms, ensuring comfort and convenience for you and your loved ones. The open-plan kitchen seamlessly flows into the dining room, providing a perfect space for gatherings and shared meals. The kitchen is not only functional but also aesthetically pleasing, making meal preparation a delightful experience.

As you step into the living area, you'll be greeted by a sense of warmth and relaxation. The space is thoughtfully designed and features beaming porcelain tiles that not only enhance the visual appeal but also offer easy maintenance.

The double garage offers ample parking space and storage options, catering to your practical needs. A lovely braai area invites you to indulge in outdoor cooking and entertainment, creating cherished memories with...

Features

Pets Allowed Yes

Interior

Bedrooms	4
Bathrooms	3
Kitchens	1
Recep. Rooms	2
Studies	1
Furnished	No

Exterior

Garages	2
Security	No
Pool	Yes
Views	False

Sizes

Land Size	942m ²
-----------	-------------------

Extras

Electric Gate Electric Garage Air Conditioner Granite Tops Washing Machine Connection

