

Seeff



Siphindile Dlamini
073 033 8955
siphindile.dlamini@seeff.com

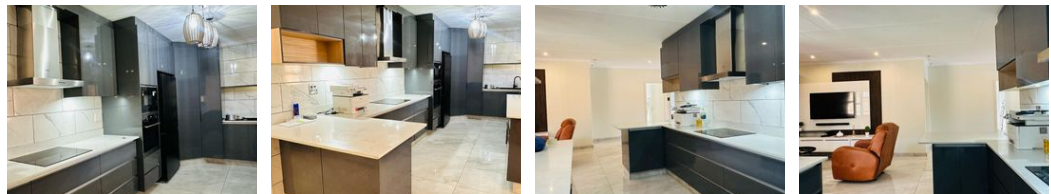
Contact Richards Bay

035 7890490

Lira Link Rd, Unit 2 Montego Park, Richards Bay Central, Richards Bay, 3900



Web Ref RLS954259



R31,500 pm

Lease Period 12 months **Availability** Immediately **Deposit** -
Annual Escalation -

3 2 2

Simplex apartment for rental

Welcome to this exquisite 3-bedroom apartment, fully furnished with modern furniture and luxurious touches throughout. As you step inside, you're greeted by an open-plan kitchen that seamlessly flows into the outside entertainment area, creating a perfect space for hosting guests or enjoying al fresco dining.

The dining room and lounge area exude comfort and style, providing ample space for relaxation and entertainment. Each of the three bedrooms is adorned with luxurious furnishings, offering a tranquil retreat for rest and rejuvenation.

With two bathrooms, including an en suite in the master bedroom, convenience is paramount. The double garage ensures secure parking for your vehicles and additional storage space.

Nestled in a quiet and safe complex, this apartment offers peace of mind and easy access to all amenities....

Features

Interior		Exterior		Sizes	
Bedrooms	3	Garages	2	Floor Size	135m ²
Bathrooms	2	Security	No	Land Size	4,962m ²
Kitchens	1	Pool	No		
Recep. Rooms	2	Views	False		
Furnished	No				

Extras

Electric Gate Air Conditioner Built In Braai Granite Tops Stove Washing Machine Connection