

**Seeff**



**Melissa Struwig**  
083 859 6029  
melissa.struwig@seeff.com

Contact Richards Bay

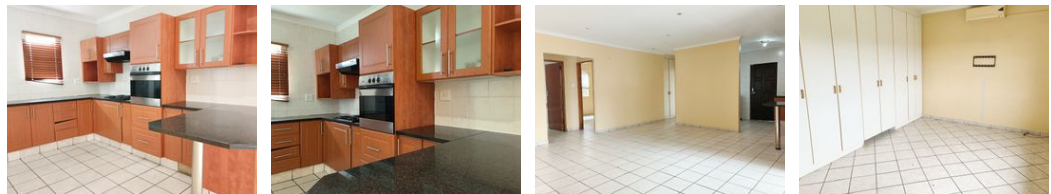
035 7890490

Lira Link Rd, Unit 2 Montego Park, Richards Bay Central, Richards Bay, 3900



SOLE MANDATE

Web Ref RLS976541



R13,000 pm

Lease Period 12 months    Availability Immediately    Deposit -  
Annual Escalation -

3    2    2

**Exclusive Mandate - Charming 3-Bedroom Townhouse in Arboretum.**

Exclusive Mandate - This exquisite 3-bedroom, 2-bathroom townhouse, boasting a generous 153m<sup>2</sup> under roof, is nestled in the sought-after Arboretum community. With its perfect blend of modern convenience and comfort, this home is designed for those who appreciate both style and practicality. Step inside to discover bright and airy open-plan living areas that seamlessly connect the kitchen, dining, and lounge spaces.

Ideal for entertaining friends or enjoying cozy evenings with family, this layout promotes an inviting atmosphere. The well-appointed kitchen features, ample counter space, ensuring that meal preparation is both efficient and enjoyable. Retreat to one of the three generously sized bedrooms, each designed with your comfort in mind. The master suite includes a private en-suite bathroom, providing a peaceful sanctuary...

**Features**

<b>Interior</b>		<b>Exterior</b>	
Bedrooms	3	Garages	2
Bathrooms	2	Security	No
Kitchens	1	Pool	No
Recep. Rooms	2	Views	False
Furnished	No		

**Extras**

Totally Walled Air Conditioner Electric Fencing Granite Tops Breakfast Nook Stove Eye Level Oven Scullery