



Siphindile Dlamini
073 033 8955
siphindile.dlamini@seeff.com

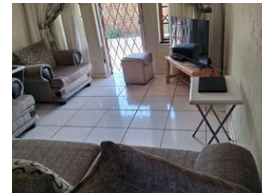
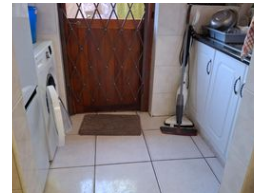
Contact Richards Bay

035 7890490

Lira Link Rd, Unit 2 Montego Park, Richards Bay Central, Richards Bay, 3900



Web Ref RLS902531



R13,500 pm

Lease Period 12 months
Annual Escalation -

Availability 01 May 2025

Deposit -

3 2 1

Sure family home centrally located

Experience the ultimate in secure and comfortable living in this stunning 3-bedroom simplex, nestled in a highly sought-after complex.

Enjoy the peace of mind that comes with living in a safe and secure environment, perfect for families, professionals, and individuals alike.

This beautifully maintained unit boasts:

- Well-appointed kitchen with scullery, ideal for culinary enthusiasts
- Spacious lounge area that seamlessly flows into a private garden, perfect for relaxation and entertainment
- 3 comfortable bedrooms, offering ample storage and natural light
- 2 modern bathrooms, conveniently located for the bedrooms

Additional features include:

- Single garage for secure parking
- Private garden, perfect for outdoor enjoyment

Features

Interior		Exterior		Sizes	
Bedrooms	3	Garages	1	Floor Size	108m ²
Bathrooms	2	Security	No	Land Size	23,540m ²
Kitchens	1	Pool	No		
Recep. Rooms	1	Views	False		
Furnished	No				

Extras

Garden Patio Electric Gate Burglar Bars Granite Tops Breakfast Nook Washing Machine Connection