



Sheryl Pillay
063 567 1657
sheryl.pillay@seeff.com

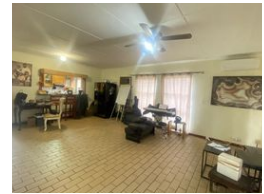
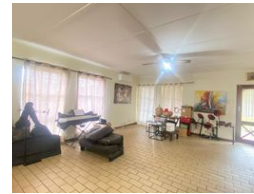
Contact Richards Bay

035 7890490

Lira Link Rd, Unit 2 Montego Park, Richards Bay Central, Richards Bay, 3900



Web Ref RLS936896



R14,800 pm

Lease Period 12 months
Annual Escalation -

Availability Immediately

Deposit -

3 2 2

Townhouse for rent in Arboretum

This beautiful unit is spacious and airy.

Offering you three spacious bedrooms, the main bedroom has an ensuite as well as a communal bathroom. All bedrooms are fitted with built-in cupboards and a spacious kitchen.

Call for your appointment to view this pet-friendly property today!

Features

Pets Allowed Yes

Interior

Bedrooms	3
Bathrooms	2
Kitchens	1
Recep. Rooms	1
Furnished	No

Exterior

Garages	2
Carports / Parkings	1
Security	No
Pool	Yes
Views	False

Sizes

Floor Size	153m ²
Land Size	17,187m ²

Extras

Extractor Fan Garden Air Conditioner Granite Tops Dishwasher Connection Washing Machine Connection