



**Siphindile Dlamini**  
 073 033 8955  
 siphindile.dlamini@seeff.com

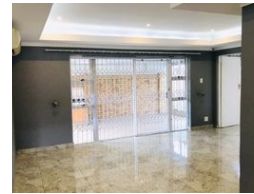
Contact Richards Bay

035 7890490

Lira Link Rd, Unit 2 Montego Park, Richards Bay Central, Richards Bay, 3900



Web Ref 4137004



R14,700 pm

**Lease Period** 12 months  
**Annual Escalation** -

**Availability** Immediately

**Deposit** -

3   2   2

This modern home situated near well located amenities is ready to move in!

The complex is well maintained with excellent security.

The fully fitted, modern kitchen will bring out the gourmet chef in you, whilst the open plan lounge and dining area offer ample space for your comfort and it flows seamlessly to the enclosed, undercover entertainment area, allowing you to enjoy a good South African gathering around the fire.

The well-kept garden is pleasing to the eye and easy to maintain.

Don't miss the opportunity to view this spectacular home.

### Features

Interior		Exterior		Sizes	
Bedrooms	3	Garages	2	Floor Size	125m <sup>2</sup>
Bathrooms	2	Security	Yes	Land Size	4,763m <sup>2</sup>
Kitchens	1	Pool	No		
Recep. Rooms	2	Views	False		
Furnished	No				

### Extras

Garden Patio Electric Gate Totally Walled Air Conditioner Built In Braai Closed Circuit TV  
 Electric Fencing Granite Tops Breakfast Nook Washing Machine Connection