

Seeff



Sheryl Pillay
063 567 1657
sheryl.pillay@seeff.com

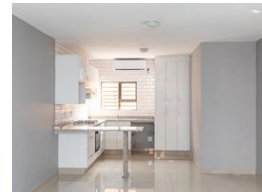
Contact Richards Bay

035 7890490

Lira Link Rd, Unit 2 Montego Park, Richards Bay Central, Richards Bay, 3900



Web Ref RLS964731



R10,500 pm

Lease Period 12 months
Annual Escalation -

Availability Immediately

Deposit -

3 2

Introducing Baywood Complex, the latest stunning development in the heart of Birdswood

Discover the ultimate in contemporary living in this brand-new complex, where modern luxury meets comfort and style. The open-plan living area boasts a sleek kitchen, perfect for entertaining, and flows seamlessly into the spacious lounge. Three generously sized bedrooms offer ample storage and built-in cupboards, while two modern bathrooms feature wall-enclosed showers for added privacy.

Enjoy the peace of mind that comes with living in a secure, gated community with 24/7 security monitoring. Take advantage of the communal outdoor spaces, perfect for relaxation or socializing, and appreciate the convenience of being close to local amenities.

The high-quality finishes throughout the complex include stylish porcelain tiles, a neutral color palette on the walls, and modern light fittings and fixtures. Don't miss out on this...

Features

Interior

Bedrooms	3
Bathrooms	2
Kitchens	1
Recep. Rooms	1
Furnished	No

Exterior

Carports / Parkings	2
Security	No
Pool	No
Views	False

Sizes

Floor Size	100m ²
Land Size	4,545m ²

Extras

Granite Tops Gas Oven Stove Dishwasher Connection Washing Machine Connection