

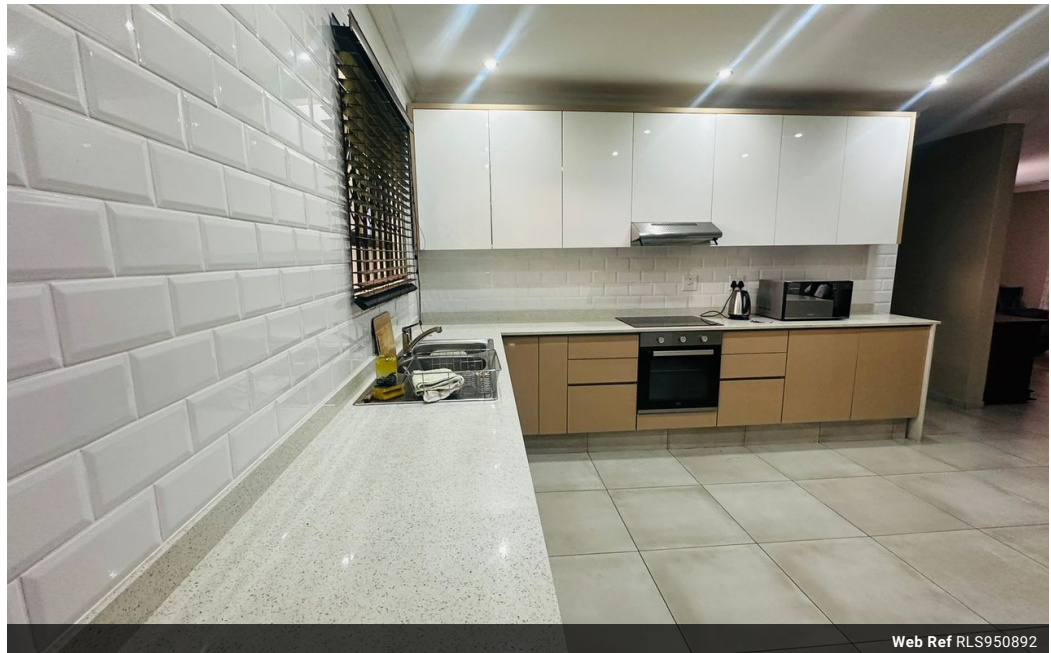


**Siphindile Dlamini**  
 073 033 8955  
 siphindile.dlamini@seeff.com

Contact Richards Bay

035 7890490

Lira Link Rd, Unit 2 Montego Park, Richards Bay Central, Richards Bay, 3900



Web Ref RLS950892



R13,900 pm

**Lease Period** 12 months **Availability** Immediately **Deposit** -  
**Annual Escalation** -

3 2 2

### 3 Bedroom duet for rental

Welcome to this contemporary 3-bedroom duet nestled in the secure neighborhood of Birdswood. A harmonious blend of functionality and elegance, this beautiful residence invites you into a modern living experience.

Upon entering, you are greeted by an open-plan lounge that seamlessly connects to a well-designed kitchen, creating a warm and inviting atmosphere for family gatherings or entertaining guests. The thoughtful layout promotes a sense of spaciousness, enhancing the overall comfort of the living area.

The house boasts three generously sized bedrooms, ensuring ample space for relaxation and privacy. The master bedroom features an ensuite bathroom, providing a luxurious retreat within the confines of your own home. The additional two bedrooms share a well-appointed bathroom, catering to the needs of both residents and...

### Features

Interior		Exterior		Sizes	
Bedrooms	3	Garages	2	Land Size	1,128m <sup>2</sup>
Bathrooms	2	Security	No		
Kitchens	1	Pool	No		
Recep. Rooms	1	Views	False		
Furnished	No				

#### Extras

Air Conditioner Breakfast Nook Washing Machine Connection

