



Sheryl Pillay
 063 567 1657
 sheryl.pillay@seeff.com

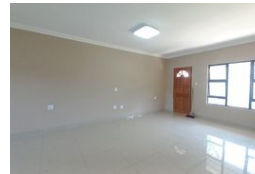
Contact Richards Bay

035 7890490

Lira Link Rd, Unit 2 Montego Park, Richards Bay Central, Richards Bay, 3900



Web Ref RLS954261



R15,200 pm

Lease Period 12 months
Annual Escalation -

Availability Immediately

Deposit -

3 2 2

Beautiful 3 bedroom home in Birdswood

This newly built property is perfectly located in the heart of Birdswood. This impeccable unit is fitted with modern finishes and has an ample amount of living space.

It is equipped with an en suite shower in the main bedroom. There is also a double garage for your vehicles.

Being close to all amenities, this unit is ideal for a family.

Call me today for a viewing!

Features

Interior

Bedrooms	3
Bathrooms	2
Kitchens	1
Recep. Rooms	1
Furnished	No

Exterior

Garages	2
Security	No
Pool	No
Views	False

Sizes

Land Size	1,012m ²
-----------	---------------------

Extras

Electric Gate Electric Fencing Granite Tops Stove Washing Machine Connection